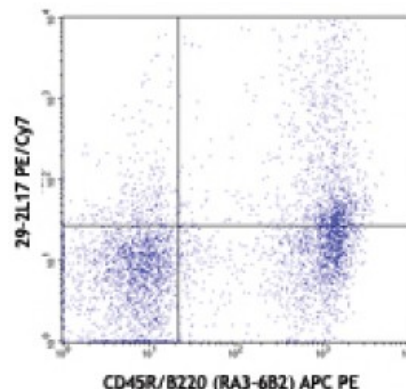


PE/Cy7 anti-mouse CD196 (CCR6)

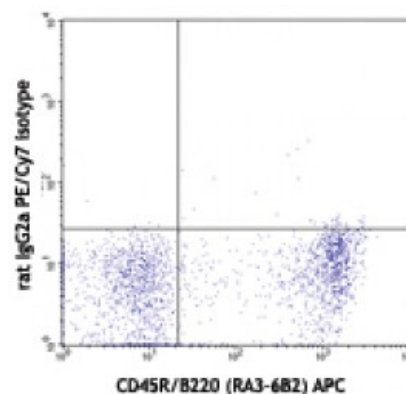
Catalog # / Size:	1249080 / 100 µg 1249075 / 25 µg
Clone:	29-2L17
Isotype:	Hamster IgG
Immunogen:	N-terminal peptide (aa. 2-38) of mouse CCR6 fused with GST
Reactivity:	Mouse
Preparation:	The antibody was purified by affinity chromatography, and conjugated with PE/Cy7 under optimal conditions. The solution is free of unconjugated PE/Cy7 and unconjugated antibody.
Formulation:	Phosphate-buffered solution, pH 7.2, containing 0.09% sodium azide.
Concentration:	0.2



C57BL/6 mouse splenocytes stained with 29-2L17 PE/Cy7 and CD45R/B220 (RA3-6B2) APC

Applications:

Applications:	Flow Cytometry
Recommended Usage:	Each lot of this antibody is quality control tested by immunofluorescent staining with flow cytometric analysis. For flow cytometric staining, the suggested use of this reagent is ≤ 1.0 microg per 10^6 cells in 100 microL volume. It is recommended that the reagent be titrated for optimal performance for each application.



C57BL/6 mouse splenocytes stained with rat IgG2a PE/Cy7 isotype and CD45R/B220 (RA3-6B2) APC

Description:	CCR6 is a G-protein linked chemokine receptor which binds the chemokine CCL20/MIP-3a. It is expressed on B lymphocytes and certain subsets of dendritic cells and T cells. CCR6 is reported to be involved in mucosal immune response and lymphocyte migration and homeostasis.
Antigen	1. Rossi D, <i>et al.</i> 1997. <i>J. Immunol.</i> 158:1033.
References:	2. Lukacs N, <i>et al.</i> 2001. <i>J. Exp. Med.</i> 194:551.
	3. Cook DN, <i>et al.</i> 2000. <i>Immunity</i> 12:495