

PE anti-mouse CD196 (CCR6)

Catalog # / Size: 1249020 / 100 µg
1249015 / 25 µg

Clone: 29-2L17

Isotype: Hamster IgG

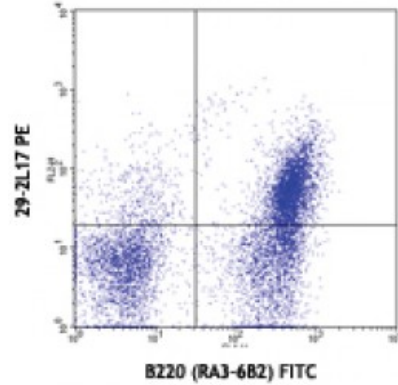
Immunogen: N-terminal peptide (aa. 2-38) of mouse CCR6 fused with GST

Reactivity: Mouse

Preparation: The antibody was purified by affinity chromatography, and conjugated with PE under optimal conditions. The solution is free of unconjugated PE and unconjugated antibody.

Formulation: Phosphate-buffered solution, pH 7.2, containing 0.09% sodium azide.

Concentration: 0.2



C57BL/6 splenocytes stained RA3-6B2 (B220) FITC and 29-2L17 PE

Applications:

Applications: Flow Cytometry

Recommended Usage: Each lot of this antibody is quality control tested by immunofluorescent staining with flow cytometric analysis. For flow cytometric staining, the suggested use of this reagent is ≤0.25 microg per million cells in 100 microL volume. It is recommended that the reagent be titrated for optimal performance for each application.

Application References: 1. Mony JT, *et al.* 2014. *Mult Scler.* [PubMed](#)
2. Shibata K, *et al.* 2014. *J. Immunol.* 192:2210. [PubMed](#)

Description: CCR6 is a G-protein linked chemokine receptor which binds the chemokine CCL20/MIP-3a. It is expressed on B lymphocytes and certain subsets of dendritic cells and T cells. CCR6 is reported to be involved in mucosal immune response and lymphocyte migration and homeostasis.

Antigen References: 1. Rossi D, *et al.* 1997. *J. Immunol.* 158:1033.
2. Lukacs N, *et al.* 2001. *J. Exp. Med.* 194:551.
3. Cook DN, *et al.* 2000. *Immunity* 12:495