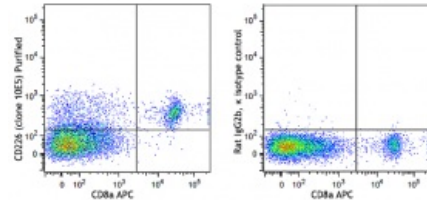


**Purified anti-mouse CD226 (DNAM-1)**

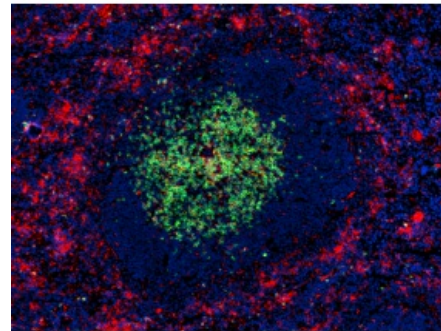
**Catalog # / Size:** 1244110 / 500 µg  
**Clone:** 10E5  
**Isotype:** Rat IgG2b, κ  
**Immunogen:** Th1 polarized T cell clones  
**Reactivity:** Mouse  
**Preparation:** The antibody was purified by affinity chromatography.  
**Formulation:** Phosphate-buffered solution, pH 7.2, containing 0.09% sodium azide.  
**Concentration:** 0.5 mg/ml



C57BL/6 mouse splenocytes were stained with CD8a APC and purified CD226 (clone 10E5)

**Applications:**

**Applications:** Flow Cytometry, Immunohistochemistry, Other  
**Recommended Usage:** Each lot of this antibody is quality control tested by immunofluorescent staining with flow cytometric analysis. For flow cytometric staining, the suggested use of this reagent is ≤1.0 µg per million cells in 100 µl volume. For immunohistochemistry on frozen tissue, a concentration range of 5.0 - 10.0 µg/ml is suggested. It is recommended that the reagent be titrated for optimal performance for each application.



C57BL/6 mouse frozen spleen section was fixed with 4% paraformaldehyde (PFA) for 10 minutes and blocked with 5% FBS for 30 minutes at room temperature. Then the section was stained with 10 µg/ml CD226 (clone 10E5) purified and CD3ε (clone 50

**Application References:** 1. Tahara Hanaoka S, *et al.* 2006. *Blood* 107:1491  
 2. Shibuya K, *et al.* 2003. *J. Exp. Med.* 198:1829

**Description:** CD226 (DNAM-1) is constitutively expressed on native CD8<sup>+</sup> cells and on CD4<sup>+</sup> T cells, macrophages and NK cells. This antibody (10E5) was reported to bind about 40% of inactivated CD4<sup>+</sup> cells and binds only to differentiated Th1 cells, but not to Th2 or Th0 cells. It is also reported to suppress antigen-specific T cell expansion and EAE (experimental allergic encephalitis) mediated by Th1 cells.

**Antigen References:** 1. Tahara Hanaoka S, *et al.* 2006. *Blood* 107:1491  
 2. Shibuya K, *et al.* 2003. *J. Exp. Med.* 198:1829