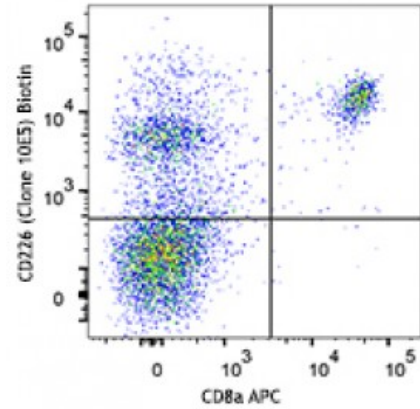


Biotin anti-mouse CD226 (DNAM-1)

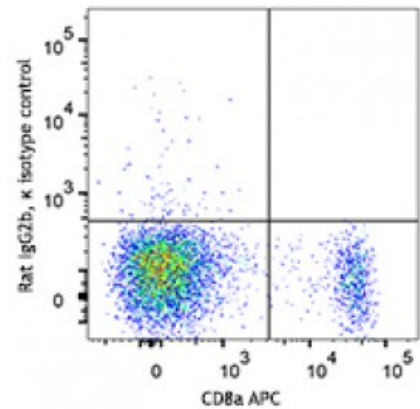
Catalog # / Size: 1244100 / 100 µg
Clone: 10E5
Isotype: Rat IgG2b, κ
Immunogen: Th1 polarized T cell clones
Reactivity: Mouse
Preparation: The antibody was purified by affinity chromatography and conjugated with biotin under optimal conditions. The solution is free of unconjugated biotin.
Formulation: Phosphate-buffered solution, pH 7.2, containing 0.09% sodium azide.
Concentration: Lot-specific



C57BL/6 mouse splenocytes were stained with CD8a APC and biotinylated CD226 (clone 10E5) (top) or biotinylated rat IgG2b, κ isotype control (bottom), followed by Streptavidin PE.

Applications:

Applications: Flow Cytometry
Recommended Usage: Each lot of this antibody is quality control tested by immunofluorescent staining with flow cytometric analysis. For flow cytometric staining, the suggested use of this reagent is ≤0.125 microg per million cells in 100 microL volume. It is recommended that the reagent be titrated for optimal performance for each application.



- Application References:**
1. Dardalhon V, *et al.* 2005. *J. Immunol.* 175:1558
 2. Huang Z, *et al.* 2011. *J Immunol.* 186:3421. [PubMed](#)

Description: CD226 (DNAM-1) is constitutively expressed on native CD8⁺ cells and on CD4⁺ T cells, macrophages and NK cells. This antibody (10E5) was reported to bind about 40% of inactivated CD4⁺ cells and binds only to differentiated Th1 cells, but not to Th2 or Th0 cells. It is also reported to suppress antigen-specific T cell expansion and EAE (experimental allergic encephalitis) mediated by Th1 cells.

- Antigen References:**
1. Tahara Hanaoka S, *et al.* 2006. *Blood* 107:1491
 2. Shibuya K, *et al.* 2003. *J. Exp. Med.* 198:1829