

APC anti-mouse CD226 (DNAM-1)

Catalog # / Size: 1244050 / 100 µg
1244045 / 25 µg

Clone: 10E5

Isotype: Rat IgG2b, κ

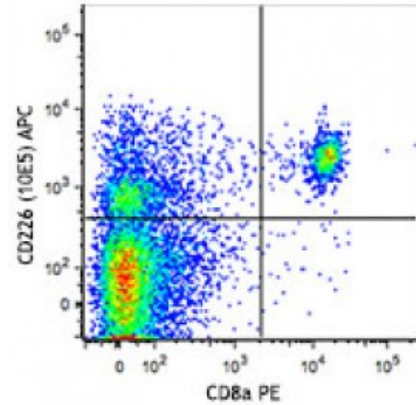
Immunogen: Th1 polarized T cell clones

Reactivity: Mouse

Preparation: The antibody was purified by affinity chromatography and conjugated with APC under optimal conditions. The solution is free of unconjugated APC and unconjugated antibody.

Formulation: Phosphate-buffered solution, pH 7.2, containing 0.09% sodium azide.

Concentration: 0.2

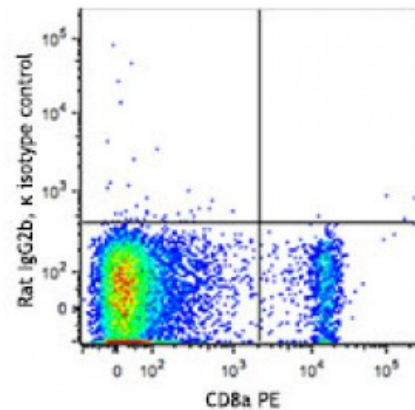


C57BL/6 mouse splenocytes were stained with CD8a PE and CD226 (clone 10E5) APC (top) or rat IgG2b, κ APC isotype control (bottom).

Applications:

Applications: Flow Cytometry

Recommended Usage: Each lot of this antibody is quality control tested by immunofluorescent staining with flow cytometric analysis. For flow cytometric staining, the suggested use of this reagent is ≤1.0 microg per million cells in 100 microL volume. It is recommended that the reagent be titrated for optimal performance for each application.



Application References: 1. Dardalhon V, *et al.* 2005. *J. Immunol.* 175:1558
2. Huang Z, *et al.* 2011. *J Immunol.* 186:3421. [PubMed](#)

Description: CD226 (DNAM-1) is constitutively expressed on native CD8⁺ cells and on CD4⁺ T cells, macrophages and NK cells. This antibody (10E5) was reported to bind about 40% of inactivated CD4⁺ cells and binds only to differentiated Th1 cells, but not to Th2 or Th0 cells. It is also reported to suppress antigen-specific T cell expansion and EAE (experimental allergic encephalitis) mediated by Th1 cells.

Antigen References: 1. Tahara Hanaoka S, *et al.* 2006. *Blood* 107:1491
2. Shibuya K, *et al.* 2003. *J. Exp. Med.* 198:1829