

**PE anti-mouse CD98 (4F2)**

**Catalog # / Size:** 1241040 / 200 µg  
1241035 / 50 µg

**Clone:** RL388

**Isotype:** Rat IgG2a, κ

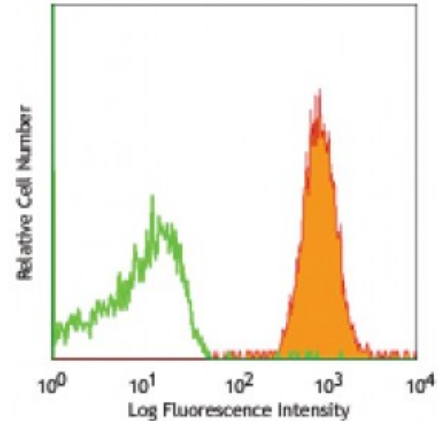
**Immunogen:** Subline of mouse T lymphoma EL4

**Reactivity:** Mouse

**Preparation:** The antibody was purified by affinity chromatography, and conjugated with PE under optimal conditions. The solution is free of unconjugated PE and unconjugated antibody.

**Formulation:** Phosphate-buffered solution, pH 7.2, containing 0.09% sodium azide.

**Concentration:** 0.2



C57BL/6 splenocytes stained with RL388 PE

**Applications:**

**Applications:** Flow Cytometry

**Recommended Usage:** Each lot of this antibody is quality control tested by immunofluorescent staining with flow cytometric analysis. For flow cytometric staining, the suggested use of this reagent is ≤0.06 microg per million cells in 100 microL volume. It is recommended that the reagent be titrated for optimal performance for each application.

**Application References:** 1. Luscher B, *et al.* 1985. *J. Immunol.* 135 :3951  
2. MacDonald HR, *et al.* 1985. *J. Immunol.* 135 :3944

**Description:** CD98 is a cell surface glycoprotein of 125 kd consisting of an 85 kd heavy chain and a 40 kd light chain. It is expressed on T, B, NK cells, granulocytes and many cell lines and tumor cells. CD98 has been shown to be involved in sodium-dependent calcium flux in muscle cells and lymphocyte activation.

**Antigen References:** 1. Luscher B, *et al.* 1985. *J. Immunol.* 135 :3951  
2. MacDonald HR, *et al.* 1985. *J. Immunol.* 135 :3944