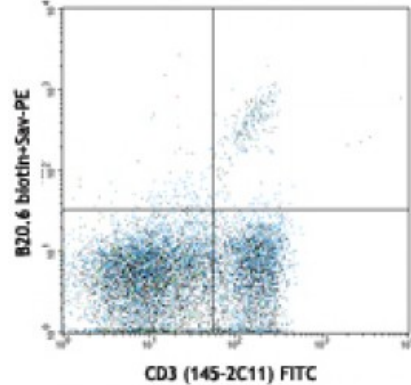


**Biotin anti-mouse TCR V $\beta$ 2**

**Catalog # / Size:** 1239520 / 250  $\mu$ g  
**Clone:** B20.6  
**Isotype:** Rat IgG2a,  $\kappa$   
**Immunogen:** Soluble TCR from mouse CTL clone CW3/1.1  
**Reactivity:** Mouse  
**Preparation:** The antibody was purified by affinity chromatography, and conjugated with biotin under optimal conditions. The solution is free of unconjugated biotin.  
**Formulation:** Phosphate-buffered solution, pH 7.2, containing 0.09% sodium azide.  
**Concentration:** 0.5



C57BL/6 mouse splenocytes stained with CD3 (145-2C11) FITC and biotinylated B20.6, followed by Sav-PE

**Applications:**

**Applications:** Flow Cytometry

**Recommended Usage:** Each lot of this antibody is quality control tested by immunofluorescent staining with flow cytometric analysis. For flow cytometric staining, the suggested use of this reagent is  $\leq 1.0$  microg per million cells in 100 microL volume. It is recommended that the reagent be titrated for optimal performance for each application.

**Application References:** 1. Necker A, *et al.* 1991. *Eur J. Immunol.* 21:3035  
2. Hodes RJ, *et al.* 1993. *J Immunol* 150:1422

**Description:** The B20.6 antibody recognizes V  $\beta$  2 TCR of all strains tested. V  $\beta$  2 bearing T lymphocytes are clonally eliminated in MHC class II I-E expressing mice neonatally infected with MMTV virus through milk feeding.

**Antigen References:** 1. Kubo RT, *et al.* 1989. *J. Immunol.* 142:2736  
2. Necker A, *et al.* 1991. *Eur. J. Immunol.* 21:3035