

Alexa Fluor™ 488 anti-mouse TCR V α 2

Catalog # / Size: 1239100 / 100 μ g
1239095 / 25 μ g

Clone: B20.1

Isotype: Rat IgG2a, λ

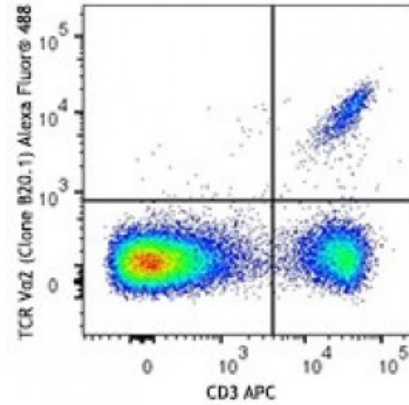
Immunogen: Soluble TCR from mouse CTL clone KB5-C20

Reactivity: Mouse

Preparation: The antibody was purified by affinity chromatography and conjugated with Alexa Fluor® 488 under optimal conditions.

Formulation: Phosphate-buffered solution, pH 7.2, containing 0.09% sodium azide.

Concentration: 0.5

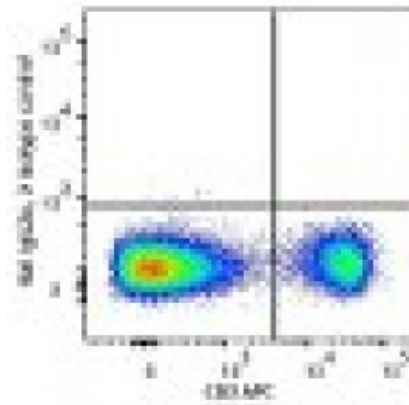


C57BL/6 mouse splenocytes were stained with CD3 APC and anti-mouse TCR V α 2 (clone B20.1) Alexa Fluor® 488 (top) or rat IgG2a Alexa Fluor® 488 isotype control (bottom).

Applications:

Applications: Flow Cytometry

Recommended Usage: Each lot of this antibody is quality control tested by immunofluorescent staining with flow cytometric analysis. For flow cytometric staining, the suggested use of this reagent is \leq 0.25 microg per million cells in 100 microL volume. It is recommended that the reagent be titrated for optimal performance for each application.



* Alexa Fluor® 488 has a maximum emission of 519 nm when it is excited at 488 nm.

Application Notes: The B20.1 antibody recognizes most members of the V α 2 TCR subfamily in mice having the a, b, and c haplotypes.

- Application References:**
1. Pircher H, *et al.* 1992. *Eur. J. Immunol.* 22:399.
 2. Gregoire C, *et al.* 1991. *P. Natl. Acad. Sci. USA* 88:8077.
 3. Kao C, *et al.* 2005. *Int. Immunol.* 17:1607. [PubMed](#)
 4. Steptoe RJ, *et al.* 2007. *J. Immunol.* 178:2094. [PubMed](#)
 5. Rao RR, *et al.* 2012. *Immunity.* 36:374. [PubMed](#)

Description: The TCR α (α) chain complexes with the TCR β (β) chain to form the T cell receptor in 95% of T cells, whereas the remaining 5% of T cells express gamma and delta chains (γ/δ). TCR V α 2 is a distinct TCR subfamily found in mice having the a, b, and c haplotypes.

Antigen 1. Kubo RT, *et al.* 1989. *J. Immunol.* 142:2736.

References: 2. Pircher H, *et al.* 1992. *Eur. J. Immunol.* 22:399.