

PE anti-mouse TCR Vα2

Catalog # / Size: 1239035 / 25 µg
1239040 / 100 µg

Clone: B20.1

Isotype: Rat IgG2a, λ

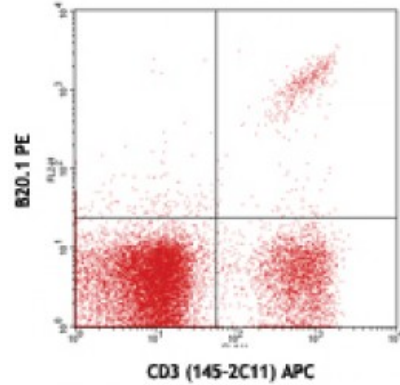
Immunogen: Soluble TCR from mouse CTL clone KB5-C20

Reactivity: Mouse

Preparation: The antibody was purified by affinity chromatography, and conjugated with PE under optimal conditions. The solution is free of unconjugated PE and unconjugated antibody.

Formulation: Phosphate-buffered solution, pH 7.2, containing 0.09% sodium azide.

Concentration: 0.2



C57BL/6 splenocytes stained with 145-2C11 (CD3) APC and B20.1 PE

Applications:

Applications: Flow Cytometry

Recommended Usage: Each lot of this antibody is quality control tested by immunofluorescent staining with flow cytometric analysis. For flow cytometric staining, the suggested use of this reagent is ≤ 0.25 microg per 10⁶ cells in 100 microL volume. It is recommended that the reagent be titrated for optimal performance for each application.

Application Notes: The B20.1 antibody recognizes most members of the Vα2 TCR subfamily in mice having the a, b, and c haplotypes.

Application References:

1. Pircher H, *et al.* 1992. *Eur. J. Immunol.* 22:399.
2. Gregoire C, *et al.* 1991. *P. Natl. Acad. Sci. USA* 88:8077.
3. Kao C, *et al.* 2005. *Int. Immunol.* 17:1607. [PubMed](#)
4. Steptoe RJ, *et al.* 2007. *J. Immunol.* 178:2094. [PubMed](#)
5. Huang JR, *et al.* 2014. *J Immunol.* 192:1972. [PubMed](#)

Description: The TCR α (α) chain complexes with the TCR β (β) chain to form the T cell receptor in 95% of T cells, whereas the remaining 5% of T cells express gamma and delta chains (γ/δ). TCR Vα2 is a distinct TCR subfamily found in mice having the a, b, and c haplotypes.

Antigen References:

1. Kubo RT, *et al.* 1989. *J. Immunol.* 142:2736
2. Pircher H, *et al.* 1992. *Eur. J. Immunol.* 22:399