

**FITC anti-mouse TCR Vα2**

**Catalog # / Size:** 1239025 / 50 µg  
1239030 / 250 µg

**Clone:** B20.1

**Isotype:** Rat IgG2a, λ

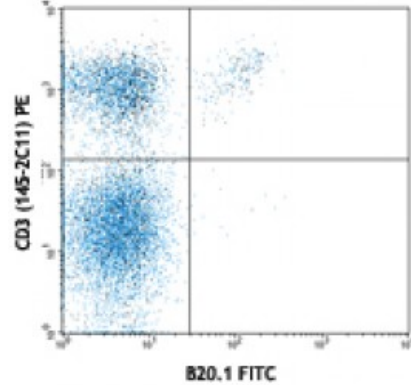
**Immunogen:** Soluble TCR from mouse CTL clone KB5-C20

**Reactivity:** Mouse

**Preparation:** The antibody was purified by affinity chromatography, and conjugated with FITC under optimal conditions. The solution is free of unconjugated FITC.

**Formulation:** Phosphate-buffered solution, pH 7.2, containing 0.09% sodium azide.

**Concentration:** 0.5



C57BL/6 mouse splenocytes stained with CD3 (145-2C11) PE and B20.1 FITC

**Applications:**

**Applications:** Flow Cytometry

**Recommended Usage:** Each lot of this antibody is quality control tested by immunofluorescent staining with flow cytometric analysis. For flow cytometric staining, the suggested use of this reagent is ≤0.25 microg per million cells in 100 microL volume. It is recommended that the reagent be titrated for optimal performance for each application.

**Application Notes:** The B20.1 antibody recognizes most members of the Vα2 TCR subfamily in mice having the a, b, and c haplotypes.

**Application References:**

1. Pircher H, *et al.* 1992. *Eur. J. Immunol.* 22:399.
2. Gregoire C, *et al.* 1991. *P. Natl. Acad. Sci. USA* 88:8077.
3. Kao C, *et al.* 2005. *Int. Immunol.* 17:1607. [PubMed](#)
4. Steptoe RJ, *et al.* 2007. *J. Immunol.* 178:2094. [PubMed](#)
5. Weber KS, *et al.* 2012. *PNAS.* 109:9511. [PubMed](#).

**Description:** The TCR α (α) chain complexes with the TCR β (β) chain to form the T cell receptor in 95% of T cells, whereas the remaining 5% of T cells express gamma and delta chains (γδ). TCR Vα2 is a distinct TCR subfamily found in mice having the a, b, and c haplotypes.

**Antigen References:**

1. Kubo RT, *et al.* 1989. *J. Immunol.* 142:2736
2. Pircher H, *et al.* 1992. *Eur. J. Immunol.* 22:399