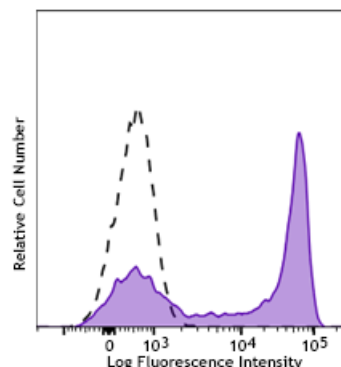


Spark Blue™ 550 anti-mouse Ly-6G

Catalog # /	1238320 / 100 µg
Size:	1238315 / 25 µg
Clone:	1A8
Isotype:	Rat IgG2a, κ
Immunogen:	Ly-6G transfected EL-4J cell line.
Reactivity:	Mouse
Preparation:	The antibody was purified by affinity chromatography and conjugated with Spark Blue™ 550 under optimal conditions.
Formulation:	Phosphate-buffered solution, pH 7.2, containing 0.09% sodium azide
Workshop Number:	750 under optimal conditions.
Concentration:	0.5 mg/mL

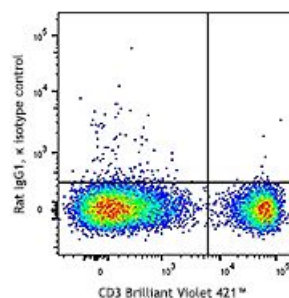


C57BL/6 mouse bone marrow cells stained with Ly-6G (clone 1A8) Spark Blue™ 550 (filled histogram) or unstained cells (open histogram). Data shown was gated on myeloid cell population.

Applications:

Applications:	Flow Cytometry
Recommended Usage:	Each lot of this antibody is quality control tested by immunofluorescent staining with flow cytometric analysis. For flow cytometric staining, the suggested use of this reagent is ≤ 0.5 µg per million cells in 100 µL volume. It is recommended that the reagent be titrated for optimal performance for each application.

* Spark Blue™ 550 has a maximum excitation of 516 nm and a maximum emission of 540 nm.



C57BL/6 mouse bone marrow cells were stained with CD150 (SLAM) (clone TC15-12F12.2) APC/Fire™ 750 (filled histogram) or rat IgG2a, κ APC/Fire™ 750 isotype control (open histogram).

Application Notes: While 1A8 recognizes only Ly-6G, clone RB6-8C5 recognizes both Ly-6G and Ly-6C. Clone RB6-8C5 binds with high affinity to mouse Ly-6G molecules and to a lower extent to Ly-6C¹⁵. Clone RB6-8C5 impairs the binding of anti-mouse Ly-6G clone 1A8¹⁵. However, clone RB6-8C5 is able to stain in the presence of anti-mouse Ly-6C clone HK1.4¹⁶.

Additional reported applications (for the relevant formats) include: immunohistochemistry⁹ of frozen sections¹⁰ and paraffin-embedded sections¹¹, and depletion^{4, 12-14}. The Ultra-LEAF™ purified antibody (Endotoxin < 0.01 EU/μg, Azide-Free, 0.2 μm filtered) is recommended for *in vivo* studies or highly sensitive assays (Cat. No. 127632, 127649, 127650, 127661 and 127662).

Application References:

1. Fleming TJ, *et al.* 1993. *J. Immunol.* 151:2399. (FC)
2. Daley JM, *et al.* 2008. *J. Leukocyte Biol.* 83:1. (FC)
3. Dietlin TA, *et al.* 2007. *J. Leukocyte Biol.* 81:1205. (FC)
4. Daley J, *et al.* 2007. *J. Leukocyte Biol.* doi:10.1189. (Deplete) [PubMed](#)
5. Tadagavadi RK, *et al.* 2010. *J. Immunol.* 185:4904. [PubMed](#)
6. Sumagin R, *et al.* 2010. *J. Immunol.* 185:7057. [PubMed](#)
7. Guiducci C, *et al.* 2010. *J. Exp Med.* 207:2931. [PubMed](#)
8. Fujita M, *et al.* 2011. *Cancer Res.* 71:2664. [PubMed](#)
9. Van Leeuwen, *et al.* 2008. *Arterioscler. Thromb. Vasc. Biol.* 28:84. (IHC)
10. Kowanetz M, *et al.* 2010. *P. Natl. Acad. Sci. USA* 107:21248. [supplementary data] (IHC)
11. Esbona K, *et al.* 2016. *Breast Cancer Res.* 18:35. (IHC)
12. Wojtasiak M, *et al.* 2010. *J. Gen. Virol.* 91:2158. (FC, Deplete)
13. Jaeger BN, *et al.* 2012. *J. Exp. Med.* 209:565. (Deplete)
14. Wozniak KL, *et al.* 2012. *BMC Immunol.* 13:65 (FC, Deplete)
15. Ribechini E, *et al.* 2009. *Eur. J. Immunol.* 39:3538.
16. Ng LG, *et al.* 2011. *J Invest. Dermatol.* 131:2058. [PubMed](#)
17. Ma C, *et al.* 2012. *J. Leukoc. Biol.* 92:1199.
18. McCartney-Francis, N, *et al.* 2014. *J Leukoc. Biol.* 96:917. [PubMed](#)
19. Her Z, *et al.* 2014. *EMBO Mol. Med.* 7:24. [PubMed](#)

Description: Lymphocyte antigen 6 complex, locus G (Ly-6G), a 21-25 kD GPI-anchored protein, is expressed on the majority of myeloid cells in bone marrow and peripheral granulocytes.

Antigen References: Fleming TJ, *et al.* 1993. *J. Immunol.* 151:2399.