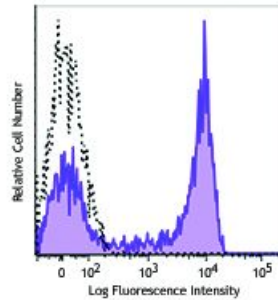


**APC/Fire™ 750 anti-mouse Ly-6G**

**Catalog # /** 1238260 / 100 µg  
**Size:** 1238255 / 25 µg  
**Clone:** 1A8  
**Isotype:** Rat IgG2a, κ  
**Immunogen:** Ly-6G transfected EL-4J cell line.  
**Reactivity:** Mouse  
**Preparation:** The antibody was purified by affinity chromatography and conjugated with APC/Fire™  
**Formulation:** Phosphate-buffered solution, pH 7.2, containing 0.09% sodium azide.  
**Workshop Number:** 750 under optimal conditions.  
**Concentration:** 0.2 mg/ml

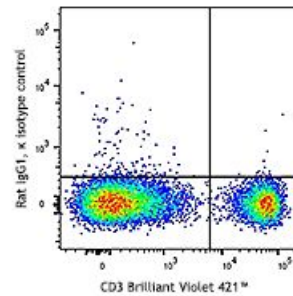


C57BL/6 mouse bone marrow cells were stained with Ly-6G (clone 1A8) APC/Fire™ 750 (filled histogram) or rat IgG2a, κ APC/Fire™ 750 isotype control (open histogram).

**Applications:**

**Applications:** Flow Cytometry  
**Recommended Usage:** Each lot of this antibody is quality control tested by immunofluorescent staining with flow cytometric analysis. For flow cytometric staining, the suggested use of this reagent is ≤0.5 µg per million cells in 100 µl volume. It is recommended that the reagent be titrated for optimal performance for each application.

\* APC/Fire™ 750 has a maximum excitation of 650 nm and a maximum emission of 787 nm.



C57BL/6 mouse bone marrow cells were stained with CD150 (SLAM) (clone TC15-12F12.2) APC/Fire™ 750 (filled histogram) or rat IgG2a, κ APC/Fire™ 750 isotype control (open histogram).

**Application Notes:** While 1A8 recognizes only Ly-6G, clone RB6-8C5 recognizes both Ly-6G and Ly-6C. Clone RB6-8C5 binds with high affinity to mouse Ly-6G molecules and to a lower extent to Ly-6C<sup>15</sup>. Clone RB6-8C5 impairs the binding of anti-mouse Ly-6G clone 1A8<sup>15</sup>. However, clone RB6-8C5 is able to stain in the presence of anti-mouse Ly-6C clone HK1.4<sup>16</sup>.

Additional reported applications (for the relevant formats) include: immunohistochemistry<sup>9</sup> of frozen sections<sup>10</sup> and paraffin-embedded sections<sup>11</sup>, and depletion<sup>4, 12-14</sup>. The Ultra-LEAF™ purified antibody (Endotoxin < 0.01 EU/μg, Azide-Free, 0.2 μm filtered) is recommended for *in vivo* studies or highly sensitive assays (Cat. No. 127632, 127649, 127650, 127661 and 127662).

**Application References:**

1. Fleming TJ, *et al.* 1993. *J. Immunol.* 151:2399. (FC)
2. Daley JM, *et al.* 2008. *J. Leukocyte Biol.* 83:1. (FC)
3. Dietlin TA, *et al.* 2007. *J. Leukocyte Biol.* 81:1205. (FC)
4. Daley J, *et al.* 2007. *J. Leukocyte Biol.* doi:10.1189. (Deplete) [PubMed](#)
5. Tadagavadi RK, *et al.* 2010. *J. Immunol.* 185:4904. [PubMed](#)
6. Sumagin R, *et al.* 2010. *J. Immunol.* 185:7057. [PubMed](#)
7. Guiducci C, *et al.* 2010. *J. Exp Med.* 207:2931. [PubMed](#)
8. Fujita M, *et al.* 2011. *Cancer Res.* 71:2664. [PubMed](#)
9. Van Leeuwen, *et al.* 2008. *Arterioscler. Thromb. Vasc. Biol.* 28:84. (IHC)
10. Kowanetz M, *et al.* 2010. *P. Natl. Acad. Sci. USA* 107:21248. [supplementary data] (IHC)
11. Esbona K, *et al.* 2016. *Breast Cancer Res.* 18:35. (IHC)
12. Wojtasiak M, *et al.* 2010. *J. Gen. Virol.* 91:2158. (FC, Deplete)
13. Jaeger BN, *et al.* 2012. *J. Exp. Med.* 209:565. (Deplete)
14. Wozniak KL, *et al.* 2012. *BMC Immunol.* 13:65 (FC, Deplete)
15. Ribechini E, *et al.* 2009. *Eur. J. Immunol.* 39:3538.
16. Ng LG, *et al.* 2011. *J Invest. Dermatol.* 131:2058. [PubMed](#)
17. Ma C, *et al.* 2012. *J. Leukoc. Biol.* 92:1199.
18. McCartney-Francis, N, *et al.* 2014. *J Leukoc. Biol.* 96:917. [PubMed](#)
19. Her Z, *et al.* 2014. *EMBO Mol. Med.* 7:24. [PubMed](#)

---

**Description:** Lymphocyte antigen 6 complex, locus G (Ly-6G), a 21-25 kD GPI-anchored protein, is expressed on the majority of myeloid cells in bone marrow and peripheral granulocytes.

**Antigen References:** Fleming TJ, *et al.* 1993. *J. Immunol.* 151:2399.