

**Pacific Blue™ anti-mouse Ly-6G**

**Catalog # / Size:** 1238060 / 100 µg  
1238055 / 25 µg

**Clone:** 1A8

**Isotype:** Rat IgG2a, κ

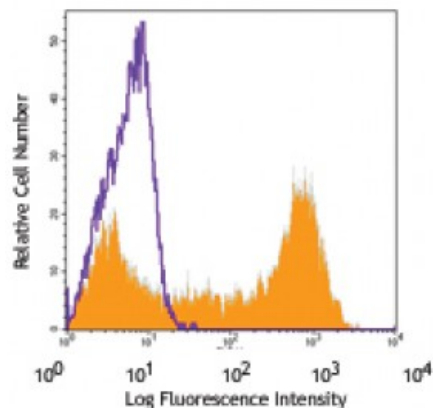
**Immunogen:** Ly-6G transfected EL-4J cell line.

**Reactivity:** Mouse

**Preparation:** The antibody was purified by affinity chromatography, and conjugated with Pacific Blue™ under optimal conditions. The solution is free of unconjugated Pacific Blue™.

**Formulation:** Phosphate-buffered solution, pH 7.2, containing 0.09% sodium azide.

**Concentration:** 0.5



C57BL/6 bone marrow cells stained with 1A8 Pacific Blue™

**Applications:**

**Applications:** Flow Cytometry

**Recommended Usage:** Each lot of this antibody is quality control tested by immunofluorescent staining with flow cytometric analysis. For flow cytometric staining, the suggested use of this reagent is ≤ 1.0 microg per 10<sup>6</sup> cells in 100 microL volume or 100 microL of whole blood. It is recommended that the reagent be titrated for optimal performance for each application.

\* Pacific Blue™ has a maximum emission of 455 nm when it is excited at 405 nm. Prior to using Pacific Blue™ conjugate for flow cytometric analysis, please verify your flow cytometer's capability of exciting and detecting the fluorochrome.

**Application Notes:** While 1A8 recognizes only Ly-6G, clone RB6-8C5 recognizes both Ly-6G and Ly-6C. Clone RB6-8C5 binds with high affinity to mouse Ly-6G molecules and to a lower extent to Ly-6C<sup>15</sup>. Clone RB6-8C5 impairs the binding of anti-mouse Ly-6G clone 1A8<sup>15</sup>. However, clone RB6-8C5 is able to stain in the presence of anti-mouse Ly-6C clone HK1.4<sup>16</sup>.

Additional reported applications (for the relevant formats) include: immunohistochemistry<sup>9</sup> of frozen sections<sup>10</sup> and paraffin-embedded sections<sup>11</sup>, and depletion<sup>4, 12-14</sup>. The LEAF™ purified antibody (Endotoxin <0.1 EU/µg, Azide-Free, 0.2 µm filtered) is recommended for functional assays (Cat. No. 127620). For *in vivo* studies or highly sensitive assays, we recommend Ultra-LEAF™ purified antibody (Cat. No. 127632) with a lower endotoxin limit than standard LEAF™ purified antibodies (Endotoxin <0.01 EU/microg).

- Application References:**
1. Fleming TJ, *et al.* 1993. *J. Immunol.* 151:2399. (FC)
  2. Daley JM, *et al.* 2008. *J. Leukocyte Biol.* 83:1. (FC)
  3. Dietlin TA, *et al.* 2007. *J. Leukocyte Biol.* 81:1205. (FC)
  4. Daley J, *et al.* 2007. *J. Leukocyte Biol.* doi:10.1189. (Deplete) [PubMed](#)
  5. Tadagavadi RK, *et al.* 2010. *J. Immunol.* 185:4904. [PubMed](#)
  6. Sumagin R, *et al.* 2010. *J. Immunol.* 185:7057. [PubMed](#)
  7. Guiducci C, *et al.* 2010. *J. Exp Med.* 207:2931. [PubMed](#)
  8. Fujita M, *et al.* 2011. *Cancer Res.* 71:2664. [PubMed](#)
  9. Van Leeuwen, *et al.* 2008. *Arterioscler. Thromb. Vasc. Biol.* 28:84. (IHC)

10. Kowanetz M, *et al.* 2010. *P. Natl. Acad. Sci. USA* 107:21248. [supplementary data] (IHC)
  11. Esbona K, *et al.* 2016. *Breast Cancer Res.* 18:35. (IHC)
  12. Wojtasiak M, *et al.* 2010. *J. Gen. Virol.* 91:2158. (FC, Deplete)
  13. Jaeger BN, *et al.* 2012. *J. Exp. Med.* 209:565. (Deplete)
  14. Wozniak KL, *et al.* 2012. *BMC Immunol.* 13:65 (FC, Deplete)
  15. Ribechini E, *et al.* 2009. *Eur. J. Immunol.* 39:3538.
  16. Ng LG, *et al.* 2011. *J Invest. Dermatol.* 131:2058. [PubMed](#)
  17. Ma C, *et al.* 2012. *J. Leukoc. Biol.* 92:1199.
  18. McCartney-Francis, N, *et al.* 2014. *J Leukoc. Biol.* 96:917. [PubMed](#)
  19. Her Z, *et al.* 2014. *EMBO Mol. Med.* 7:24. [PubMed](#)
- 

**Description:** Lymphocyte antigen 6 complex, locus G (Ly-6G), a 21-25 kD GPI-anchored protein, is expressed on the majority of myeloid cells in bone marrow and peripheral granulocytes.

**Antigen** Fleming TJ, *et al.* 1993. *J. Immunol.* 151:2399.  
**References:**