

Pacific Blue™ anti-mouse CD73

Catalog # / Size: 1236060 / 100 µg
1236055 / 25 µg

Clone: TY/11.8

Isotype: Rat IgG1, κ

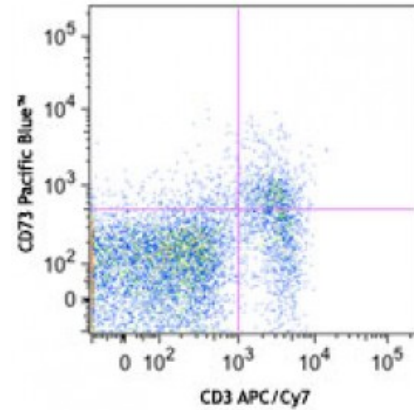
Immunogen: CHO cells transfected with mouse CD73

Reactivity: Mouse

Preparation: The antibody was purified by affinity chromatography, and conjugated with Pacific Blue™ under optimal conditions. The solution is free of unconjugated Pacific Blue™.

Formulation: Phosphate-buffered solution, pH 7.2, containing 0.09% sodium azide.

Concentration: 0.5

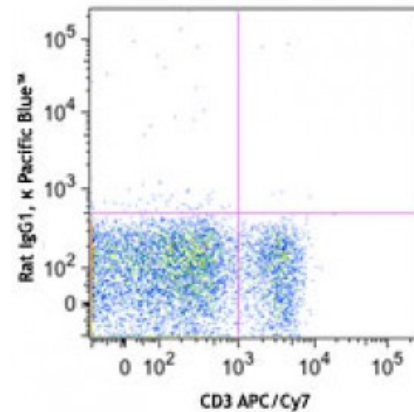


C57BL/6 mouse splenocytes were stained with CD3 APC/Cy7 and CD73 (clone TY/11.8) Pacific Blue™ (top) or rat IgG1, κ Pacific Blue™ isotype control (bottom).

Applications:

Applications: Flow Cytometry

Recommended Usage: Each lot of this antibody is quality control tested by immunofluorescent staining with flow cytometric analysis. For flow cytometric staining, the suggested use of this reagent is ≤0.5 microg per million cells in 100 microL volume or 100 microL of whole blood. It is recommended that the reagent be titrated for optimal performance for each application.



* Pacific Blue™ has a maximum emission of 455 nm when it is excited at 405 nm. Prior to using Pacific Blue™ conjugate for flow cytometric analysis, please verify your flow cytometer's capability of exciting and detecting the fluorochrome.

Application References: 1. Yamshita Y, *et al* 1998. *Eur. J. Immunol.* 28:2981.
2. Bentley JK, *et al.* 2010. *Respir. Res.* 11:127. (IHC-paraffin)

Description: CD73 (ecto-5`-nucleotidase) is a 69 kD GPI-anchored surface protein. In mice, expression of CD73 in bone marrow is restricted to CD11b⁺ myeloid cells. In spleen, it is largely expressed on T cells.

Antigen References: 1. Yamashita Y, *et al* 1998. *Eur. J. Immunol.* 28:2981.
2. Resta R, *et al.* 1998. *Immunol. Rev.* 161:95.