

PE/Dazzle™ 594 anti-mouse CD8b

Catalog # / Size: 1233110 / 100 µg
1233105 / 25 µg

Clone: YTS156.7.7

Isotype: Rat IgG2b, κ

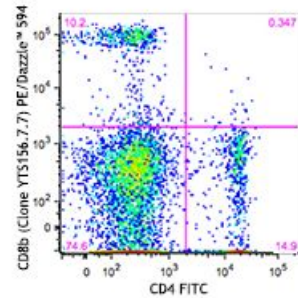
Immunogen: Mouse thymocytes

Reactivity: Mouse

Preparation: The antibody was purified by affinity chromatography and conjugated with PE/Dazzle™ 594 under optimal conditions. The solution is free of unconjugated PE/Dazzle™ 594 and unconjugated antibody.

Formulation: Phosphate-buffered solution, pH 7.2, containing 0.09% sodium azide.

Concentration: 0.2



C57BL/6 mouse splenocytes were stained with CD4 FITC and CD8b (clone YTS156.7.7) PE/Dazzle™ 594 (top) or rat IgG2b, κ isotype control PE/Dazzle™ 594 (bottom).

Applications:

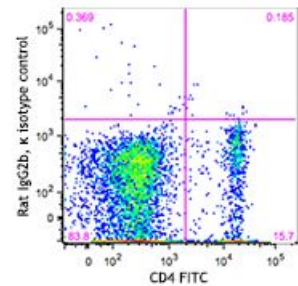
Applications: Flow Cytometry

Recommended Usage: Each lot of this antibody is quality control tested by immunofluorescent staining with flow cytometric analysis. For flow cytometric staining, the suggested use of this reagent is ≤0.06 microg per million cells in 100 microl volume. It is recommended that the reagent be titrated for optimal performance for each application.

* PE/Dazzle™ 594 has a maximum excitation of 566 nm and a maximum emission of 610 nm.

Application Notes: Additional reported applications (for the relevant formats) include: immunohistochemistry of acetone-fixed frozen tissue sections.

Application References: 1. McNical AM, *et al.* 2007. *Eur. J. Immunol.* 37:1634.



Description: CD8b is the 32 kD β chain of CD8, also known as Lyt-3 or Ly-3. It is a member of the Ig superfamily expressed as a heterodimer with the CD8α chain on a subset of MHC class I-restricted T cells and most thymocytes. CD8 is a co-receptor for the TCR complex involved in T cell activation.

Antigen References: 1. Barclay A, *et al.* 1997. *The Leukocyte antigen Facts Book* Academic Press.
2. Zamoyska R. 1994. *Immunity* 1:243-246.
3. Ellmeier W, *et al.* 1999. *Annu. Rev Immunol* 17:523.
4. Ledbetter JA, *et al.*