

PE/Cy7 anti-mouse TCR Vβ11

Catalog # / Size: 1229575 / 25 µg
1229580 / 100 µg

Clone: KT11

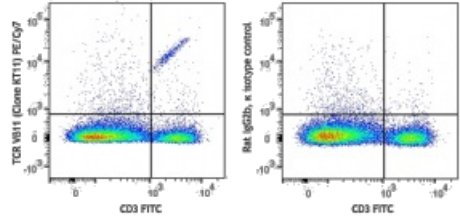
Isotype: Rat IgG2b, κ

Reactivity: Mouse

Preparation: The antibody was purified by affinity chromatography and conjugated with PE/Cy7 under optimal conditions. The solution is free of unconjugated PE/Cy7 and unconjugated antibody.

Formulation: Phosphate-buffered solution, pH 7.2, containing 0.09% sodium azide.

Concentration: 0.2 mg/ml



C57BL/6 splenocytes were stained with CD3 (clone 145-2C11) FITC and TCR Vβ11 (clone KT11) PE/Cy7 (left) or rat IgG2b, κ PE/Cy7 isotype control (right).

Applications:

Applications: Flow Cytometry

Recommended Usage: Each lot of this antibody is quality control tested. For flow cytometric staining, the suggested use of this reagent is ≤0.65 µg per million cells in 100 µl volume. It is recommended that the reagent be titrated for optimal performance for each application.

Application References: 1. Quigley MF, et al. 2010. *Proc Natl Acad Sci USA*. 9:19414. [PubMed](#)

Description: The Vβ11 gene locus is deleted in mice of TCR a haplotype (C57BR, C57L, SJL, SWR) and TCR c haplotype (RIII). Mice of TCR b haplotype (C57BL, BALB/c, AKR, etc) have Vβ11-bearing T cells. However, mice expressing MHC class II I-E and some superantigens, such as Mtv-8, Mtv-9 and Mtv-11 will show a partial deletion of Tβ11-bearing T cells.