

**FITC anti-mouse FR4 (Folate Receptor 4)**

**Catalog # / Size:** 1225025 / 50 µg  
1225030 / 200 µg

**Clone:** 12A5

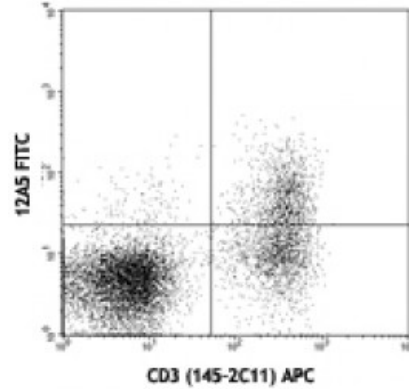
**Isotype:** Rat IgG2b, κ

**Reactivity:** Mouse

**Preparation:** The antibody was purified by affinity chromatography, and conjugated with FITC under optimal conditions. The solution is free of unconjugated FITC.

**Formulation:** Phosphate-buffered solution, pH 7.2, containing 0.09% sodium azide.

**Concentration:** 0.5



C57BL/6 mouse splenocytes stained with CD3 (145-2C11) APC and 12A5 FITC

**Applications:**

**Applications:** Flow Cytometry

**Recommended Usage:** Each lot of this antibody is quality control tested by immunofluorescent staining with flow cytometric analysis. For flow cytometric staining, the suggested use of this reagent is  $\leq 0.25$  microg per  $10^6$  cells in 100 microL volume. It is recommended that the reagent be titrated for optimal performance for each application.

**Application References:** 1.Yamaguchi T *et al.* 1007:*Immunity* 27(1)145

**Description:** Folate receptor 4 (FR4) is a surface receptor for folic acid (Vitamin B9).It was recently reported that FR4 is highly and constitutively expressed on mouse CD4<sup>+</sup> CD25<sup>+</sup> natural regulatory T cells (Treg).The high expression of this surface marker on Treg can be used in combination with CD4 and CD25 to distinguish Treg from other types of T cells.Since FR4 is a surface marker,this antibody may be used in combination with anti-CD4 and/or CD25 to sort living T reg cells for functional studies.

**Antigen References:** 1. Yamaguchi T *et al* 2007. *Immunity* 27:145  
2. Spiegelstein O *et al.* 2000 *Gene* 258:117