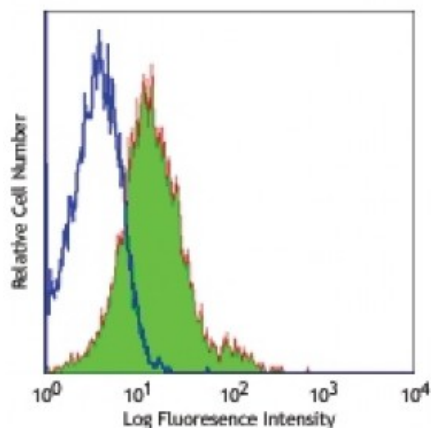


**Purified anti-mouse CD1d (CD1.1, Ly-38)**

**Catalog # / Size:** 1217510 / 500 µg  
**Clone:** 1B1  
**Isotype:** Rat IgG2b, κ  
**Immunogen:** Mouse Cd1.1 cDNA-transfected RMA-S mouse T lymphoma  
**Reactivity:** Mouse  
**Preparation:** The antibody was purified by affinity chromatography.  
**Formulation:** Phosphate-buffered solution, pH 7.2, containing 0.09% sodium azide.  
**Concentration:** 0.5



C57BL/6 mouse splenocytes stained with purified 1B1, followed anti-rat IgG FITC

**Applications:**

**Applications:** Other  
**Recommended Usage:** Each lot of this antibody is quality control tested by immunofluorescent staining with flow cytometric analysis. For flow cytometric staining, the suggested use of this reagent is ≤0.25 microg per million cells in 100 microL volume. It is recommended that the reagent be titrated for optimal performance for each application.  
**Application Notes:** Additional reported applications (for the relevant formats) include: immunoprecipitation, immunohistochemical staining, and blocking function3.

This product is for research use only and is not to be used for commercial purposes. Use of this product to produce products for sale or for diagnostic, therapeutic or drug discovery purposes is prohibited. In order to obtain a license to use this product for commercial purposes, contact the Regents of the University of California.

**Application References:**  
1. Fischer K, *et al.* 2004. *P. Natl. Acad. Sci. USA* 101:10685. (Block)  
2. Brozovic S, *et al.* 2004. *Nat. Med.* 10:535.  
3. Brossay L, *et al.* 1997. *J. Immunol.* 159:1216. (Block)  
4. Jiang J, *et al.* 2012. *PLoS One.* 7:47487. [PubMed](#)

**Description:** CD1d, known as CD1.1 and Ly-38, is a 48 kD type I membrane glycoprotein with structural similarities to MHC class I and is non-covalently associated with β2-microglobulin. In humans, CD1 family consists of group I proteins (CD1a, CD1b, and CD1c), group II (CD1d), and group III (CD1e). But CD1d is the only CD1 molecule has been found in mouse. Mouse CD1d has broad tissue distribution, and is found on leukocytes, dendritic cells, epithelial cells, and thymocytes. CD1d plays a role in non-peptide glycolipid antigen presentation to CD1d-restricted T cells. It has been shown that PKCδ is a critical regulator of CD1d-mediated antigen presentation.

**Antigen References:**  
1. Brudin N, *et al.* 1998. *J. Immunol.* 161:3271.  
2. Amano M, *et al.* 1998. *J. Immunol.* 161:1710.

3. Brossay L, *et al.* 1997. *J. Immunol.* 159:1216.
4. Dougan SK, *et al.* 2007.