

**Alexa Fluor® 700 anti-mouse CD21/CD35 (CR2/CR1)**

**Catalog # / Size:** 1217160 / 100 µg  
1217155 / 25 µg

**Clone:** 7E9

**Isotype:** Rat IgG2a, κ

**Immunogen:** CD35/CFA

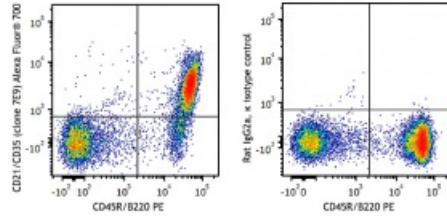
**Reactivity:** Mouse

**Preparation:** The antibody was purified by affinity chromatography and conjugated with Alexa Fluor® 700 under optimal conditions.

**Formulation:** Phosphate-buffered solution, pH 7.2, containing 0.09% sodium azide

**Workshop Number:** HCDM listed

**Concentration:** 0.5 mg/mL



C57BL/6 splenocytes were stained with CD45R/B220 PE and CD21/CD35 (CR2/CR1) (clone 7E9) Alexa Fluor® 700 (left) or rat IgG2a, κ isotype control Alexa Fluor® 700 (right).

**Applications:**

**Applications:** Flow Cytometry

**Recommended Usage:** Each lot of this antibody is quality control tested by immunofluorescent staining with flow cytometric analysis. For flow cytometric staining, the suggested use of this reagent is ≤ 1.0 µg per million cells in 100 µL volume. It is recommended that the reagent be titrated for optimal performance for each application.

\* Alexa Fluor® 700 has a maximum emission of 719 nm when it is excited at 633 nm / 635 nm. Prior to using Alexa Fluor® 700 conjugate for flow cytometric analysis, please verify your flow cytometer's capability of exciting and detecting the fluorochrome.

**Application Notes:** Anti-mouse CD31 clones 390 and MEC13.3 bind to their respective non-overlapping epitopes in IgD2 of CD31.<sup>8</sup> Additional reported applications (in the relevant formats) include: immunoprecipitation<sup>1</sup>, *in vitro* and *in vivo* blocking of CD31-mediated cell-cell interactions<sup>1-4</sup>, and immunohistochemical staining<sup>1,5,6</sup> of acetone-fixed frozen sections and zinc-fixed paraffin-embedded sections.

**Special Note:** The antibody works well on acetone-fixed frozen sections as well as Zinc-fixed paraffin-embedded sections. It sometime works on formalin-fixed and paraformaldehyde-fixed paraffin-embedded tissue sections but inconsistent results have been reported. This antibody is not recommended for formalin-fixed paraffin-embedded sections or for Western blot analysis.

- Application References:**
1. Boackle S, et al. 2001 *Immunity* 15:775.
  2. de Andres B, et al. 2012. *J. Immunol.* 189:2300. [PubMed](#)
  3. Chiu YK, et al. 2014. *J Immunol.* 193:2207. [PubMed](#)
  4. Koenig PA, et al. 2014. *J Biol Chem.* 289:34490. [PubMed](#)

**Description:** CD21, also known as CR2 (complement receptor 2) and C3d receptor, binds C3d and iC3b. It is also a receptor of Epstein-Barr virus. CD35, also known as CR1, binds C3b, iC3b, C4b, and iC4b. CD21/CD35 is primarily expressed on B lymphocytes, mast cells, follicular dendritic cells, macrophages, and activated granulocytes. CD21/CD35 forms part of the B-cell antigen receptor complex with CD19 and CD81 and is involved in signal transduction.

**Antigen**  
**References:**

1. Kozono Y, *et al.* 1998. *J. Immunol.* 160:1562.
2. Shimizu I, *et al.* 2007. *Blood* 109:1773.
3. Roozendaal R and MC. Carroll. 2007. *Immunol. Rev.* 219:157.