

PE/Dazzle™ 594 anti-mouse CD14

Catalog # / Size: 1216630 / 100 µg
1216625 / 25 µg

Clone: Sa14-2

Isotype: Rat IgG2a, κ

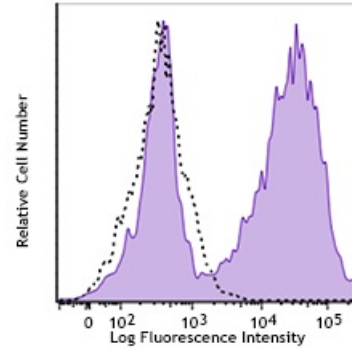
Immunogen: Mouse thymus or spleen

Reactivity: Mouse

Preparation: The antibody was purified by affinity chromatography and conjugated with PE/Dazzle™ 594 under optimal conditions. The solution is free of unconjugated PE/Dazzle™ 594 and unconjugated antibody.

Formulation: Phosphate-buffered solution, pH 7.2, containing 0.09% sodium azide.

Concentration: 0.2 mg/ml



Thioglycollate-elicited BALB/c mouse peritoneal macrophages were stained with CD14 (clone Sa14-2) PE/Dazzle™ 594 (filled histogram) or rat IgG2a, κ PE/Dazzle™ 594 isotype control (open histogram).

Applications:

Applications: Flow Cytometry

Recommended Usage: Each lot of this antibody is quality control tested by immunofluorescent staining with flow cytometric analysis. For flow cytometric staining, the suggested use of this reagent is ≤0.25 µg per million cells in 100 µl volume. It is recommended that the reagent be titrated for optimal performance for each application.

- Application References:**
1. Stocks S, *et al.* 1990. *Biochem. J.* 268:275.
 2. Akashi S, *et al.* 2003. *J. Exp. Med.* 198:1035.
 3. Matsuura K, *et al.* 1994. *J. Exp. Med.* 179:1671.
 4. Liu S, *et al.* 1998.

Description: CD14 is a 53-55 kD glycosylphosphatidylinositol (GPI)-linked membrane glycoprotein also known as LPS receptor. CD14 is expressed on macrophages, dendritic cells, Kupffer cells, hepatocytes, and granulocytes. As a high-affinity receptor for LPS-LBP (LPS-binding protein) complex, CD14, in association with Toll-like Receptor 4 (TLR4) or 2 (TLR2), is involved in the clearance of gram-negative pathogens.

- Antigen References:**
1. Stocks S, *et al.* 1990. *Biochem. J.* 268:275.
 2. Akashi S, *et al.* 2003. *J. Exp. Med.* 198:1035.
 3. Matsuura K, *et al.* 1994. *J. Exp. Med.* 179:1671.
 4. Liu S, *et al.* 1998.