

## APC/Cy7 anti-mouse CD14

**Catalog # /** 1216590 / 100 µg  
**Size:** 1216585 / 25 µg

**Clone:** Sa14-2

**Isotype:** Rat IgG2a, κ

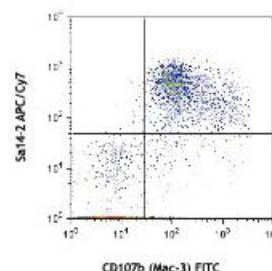
**Immunogen:** Mouse thymus or spleen

**Reactivity:** Mouse

**Preparation:** The antibody was purified by affinity chromatography and conjugated with APC/Cy7 under optimal conditions. The solution is free of unconjugated APC/Cy7 and unconjugated antibody.

**Formulation:** Phosphate-buffered solution, pH 7.2, containing 0.09% sodium azide.

**Concentration:** 0.2

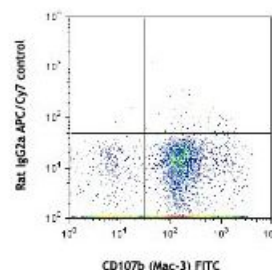


Thioglycolate-elicited Balb/c mouse peritoneal macrophages were stained with CD107b (Mac-3) FITC and CD14 (clone Sa14-2) APC/Cy7 (top) or rat IgG2a, κ APC/Cy7 isotype control (bottom).

## Applications:

**Applications:** Flow Cytometry

**Recommended Usage:** Each lot of this antibody is quality control tested by immunofluorescent staining with flow cytometric analysis. For flow cytometric staining, the suggested use of this reagent is ≤0.5 microg per million cells in 100 microl volume. It is recommended that the reagent be titrated for optimal performance for each application.



**Description:** CD14 is a 53-55 kD glycosylphosphatidylinositol (GPI)-linked membrane glycoprotein also known as LPS receptor. CD14 is expressed on macrophages, dendritic cells, Kupffer cells, hepatocytes, and granulocytes. As a high-affinity receptor for LPS-LBP (LPS-binding protein) complex, CD14, in association with Toll-like Receptor 4 (TLR4) or 2 (TLR2), is involved in the clearance of gram-negative pathogens.

**Antigen References:**

1. Stocks S, *et al.* 1990. *Biochem. J.* 268:275.
2. Akashi S, *et al.* 2003. *J. Exp. Med.* 198:1035.
3. Matsuura K, *et al.* 1994. *J. Exp. Med.* 179:1671.
4. Liu S, *et al.* 1998.