

Biotin anti-mouse CD14

Catalog # / Size: 1216525 / 50 µg
1216530 / 500 µg

Clone: Sa14-2

Isotype: Rat IgG2a, κ

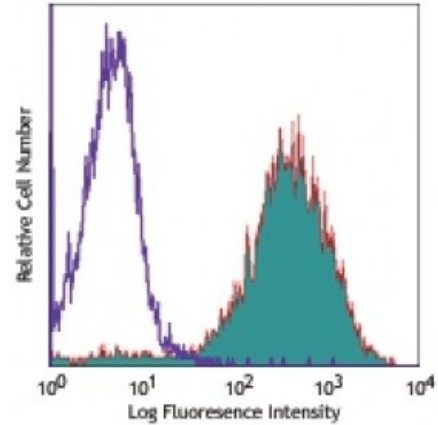
Immunogen: Mouse thymus or spleen

Reactivity: Mouse

Preparation: The antibody was purified by affinity chromatography, and conjugated with biotin under optimal conditions. The solution is free of unconjugated biotin.

Formulation: Phosphate-buffered solution, pH 7.2, containing 0.09% sodium azide.

Concentration: 0.5



Thioglycolate-elicited Balb/c mouse peritoneal macrophages stained with biotinylated Sa14-2, followed by Sav-PE

Applications:

Applications: Flow Cytometry, Immunohistochemistry

Recommended Usage: Each lot of this antibody is quality control tested by immunofluorescent staining with flow cytometric analysis. For flow cytometric staining, the suggested use of this reagent is ≤ 1.0 microg per million cells in 100 microL volume. It is recommended that the reagent be titrated for optimal performance for each application.

Application References: 1. Hajishengallis G, *et al.* 2006. *Infect. Immun.* 74:5658.

Description: CD14 is a 53-55 kD glycosylphosphatidylinositol (GPI)-linked membrane glycoprotein also known as LPS receptor. CD14 is expressed on macrophages, dendritic cells, Kupffer cells, hepatocytes, and granulocytes. As a high-affinity receptor for LPS-LBP (LPS-binding protein) complex, CD14, in association with Toll-like Receptor 4 (TLR4) or 2 (TLR2), is involved in the clearance of gram-negative pathogens.

Antigen References: 1. Stocks S, *et al.* 1990. *Biochem. J.* 268:275.
2. Akashi S, *et al.* 2003. *J. Exp. Med.* 198:1035.
3. Matsuura K, *et al.* 1994. *J. Exp. Med.* 179:1671.
4. Liu S, *et al.* 1998.