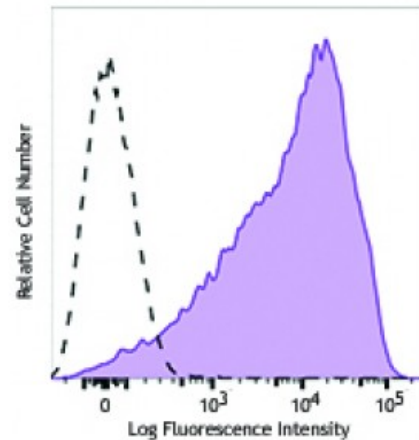


PE/Dazzle™ 594 anti-mouse Ly-6A/E (Sca-1)

Catalog # / Size:	1212640 / 100 µg 1212635 / 25 µg
Clone:	E13-161.7
Isotype:	Rat IgG2a, κ
Immunogen:	Mouse pre-T cells
Reactivity:	Mouse
Preparation:	The antibody was purified by affinity chromatography and conjugated with PE/Dazzle™ 594 under optimal conditions. The solution is free of unconjugated PE/Dazzle™ 594 and unconjugated antibody.
Formulation:	Phosphate-buffered solution, pH 7.2, containing 0.09% sodium azide.
Concentration:	0.2



C57BL/6 mouse splenocytes were stained with Ly-6A/E (clone E13-161.7) PE/Dazzle™ 594 (filled histogram) or rat IgG2a, κ PE/Dazzle™ 594 isotype control (open histogram).

Applications:

Applications:	Flow Cytometry
Recommended Usage:	Each lot of this antibody is quality control tested by immunofluorescent staining with flow cytometric analysis. For flow cytometric staining, the suggested use of this reagent is ≤0.25 microg per million cells in 100 microL volume. It is recommended that the reagent be titrated for optimal performance for each application. * PE/Dazzle™ 594 has a maximum excitation of 566 nm and a maximum emission of 610 nm.
Application Notes:	Additional reported applications (for the relevant formats) include: complement-mediated cytotoxicity ¹ , immunohistochemical staining of frozen sections ² and Bouin-fixed, paraffin-embedded samples ⁴ , immunofluorescence microscopy ⁴ , and immunoprecipitation ³ . The two Sca-1 recognizing clones D7 and E13-161.7 have been shown to bind distinct epitopes due to the inability of D7 to block the binding of E13-161.7 ⁷ .
Application References:	<ol style="list-style-type: none">1. Aihara Y, <i>et al.</i> 1986. <i>Eur. J. Immunol.</i> 16:1391. (CMCD)2. Spangrude GJ, <i>et al.</i> 1988. <i>J. Immunol.</i> 141:3697. (IHC)3. van de Rijin M, <i>et al.</i> 1989. <i>P. Natl. Acad. Sci. USA</i> 86:4634. (IP)4. Bamezai A and Rock KL. 1995. <i>Proc. Natl. Acad. Sci. USA</i> 92:4294.5. van Bragt MPA, <i>et al.</i> 2005. <i>Biol. Reprod.</i> 73:634. (IHC, IF)6. Brandi C, <i>et al.</i> 2009. <i>Exp Eye Res.</i> 89:209. PubMed7. Rosas M, <i>et al.</i> 2010. <i>J. Leukoc. Biol.</i> 88:169. PubMed8. Felthaus O, <i>et al.</i> 2010. <i>Neurosci Lett.</i> 471:179. PubMed

Description: Ly-6A/E is an 18 kD member of the Ly-6 multigene family also known as Sca-1. Ly6A/E is a glycosylphosphatidylinositol (GPI)-linked protein expressed on

hematopoietic stem cells. In mice expressing the Ly-6.2 haplotype (e.g., AKR, C57BL, C57BR, DBA/2, SJL, SWR, and 129), Ly-6A/E is also expressed on peripheral B lymphocytes and thymic and peripheral T lymphocytes. Strains expressing the Ly-6.1 haplotype (e.g., BALB/c, CBA, C3H/He, DBA/1, and NZB) have low Ly-6A/E expression on resting peripheral lymphocytes. The expression of Ly-6A/E on lymphocytes is upregulated upon activation from both Ly6.1 and Ly6.2 haplotype mice. Ly-6A/E is thought to be involved in the regulation of both T and B cell responses. The E13-161.7 antibody has been reported to be useful for immunohistochemical staining of frozen sections, immunoprecipitation, flow cytometry, and complement-mediated cytotoxicity.

**Antigen
References:**

1. Rock KL, *et al.* 1989. *Immunol. Rev.* 111:195.
2. Morrison SJ, *et al.* 1994. *Immunity* 1:661.
3. Spangrude GJ, *et al.* 1988. *J. Immunol.* 141:3697.
4. Malek T, *et al.* 1986. <