

Brilliant Violet 650™ anti-mouse CD326 (Ep-CAM)

Catalog # / Size: 1191205 / 50 µg

Clone: G8.8

Isotype: Rat IgG2a, κ

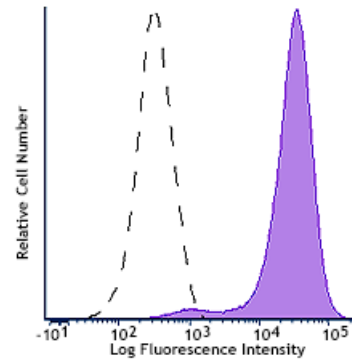
Immunogen: TE-71 thymic epithelial cell line

Reactivity: Mouse

Preparation: The antibody was purified by affinity chromatography and conjugated with Brilliant Violet 650™ under optimal conditions.

Formulation: Phosphate-buffered solution, pH 7.2, containing 0.09% sodium azide and BSA (origin USA)

Concentration: 0.2 mg/mL



TE-71 (mouse thymic epithelial stromal cell line) was stained with CD326 (clone G8.8) Brilliant Violet 650™ (filled histogram) or rat IgG2a, κ Brilliant Violet 650™ isotype control (open histogram).

Applications:

Applications: Flow Cytometry

Recommended Usage: Each lot of this antibody is quality control tested by immunofluorescent staining with flow cytometric analysis. For flow cytometric staining, the suggested use of this reagent is ≤ 0.25 µg per million cells in 100 µL volume. It is recommended that the reagent be titrated for optimal performance for each application.

Brilliant Violet 650™ excites at 405 nm and emits at 645 nm. The bandpass filter 660/20 nm is recommended for detection, although filter optimization may be required depending on other fluorophores used. Be sure to verify that your cytometer configuration and software setup are appropriate for detecting this channel. Refer to your instrument manual or manufacturer for support. Brilliant Violet 650™ is a trademark of Sirigen Group Ltd.

This product is subject to proprietary rights of Sirigen Inc. and is made and sold under license from Sirigen Inc. The purchase of this product conveys to the buyer a non-transferable right to use the purchased product for research purposes only. This product may not be resold or incorporated in any manner into another product for resale. Any use for therapeutics or diagnostics is strictly prohibited. This product is covered by U.S. Patent(s), pending patent applications and foreign equivalents.

Application Notes: Additional reported applications for clone G8.8 (for the relevant formats) include: immunohistochemistry of frozen sections: acetone fixed¹, with or without OCT embedding^{2,4}.

**Application
References:**

1. Farr A, et al. 1991. *J. Histochem. Cytochem.* 39:645. (FC, IHC)
 2. Dooley J, et al. 2005. *J. Immunol.* 175:4331. (FC, IHC)
 3. Hinterberger M, et al. 2010. *Nat. Immunol.* 11:512. (FC) [PubMed](#)
 4. Gracz AD, et al. 2010. *Am J. Physiol Gastrointest Liver Physiol.* 298:590. (IHC) [PubMed](#)
 5. Nudel I, et al. 2011. *J. Immunol.* 186:891. [PubMed](#)
 6. Morimoto H, et al. 2012. *Biol Reprod.* 86:148. [PubMed](#)
 7. Ishii K, et al. 2012. *Development.* 139:1734. [PubMed](#)
 8. Takehashi M, et al. 2012. *Biol Reprod.* 86:178. [PubMed](#)
 9. Murakami R, et al. 2013. *PLoS One.* 8:73270. [PubMed](#)
 10. Taguchi K, et al. 2014. *Mol Cell Biol.* 34:900. [PubMed](#)
 11. Hirokawa Y, et al. 2014. *Am J Physiol Gastrointest Liver Physiol.* 306:547. [PubMed](#)
 12. Ding X, et al. 2015. *Cancer Res.* 75:330. [PubMed](#)
-

Description: EpCAM (CD326) mediates calcium-independent homophilic cell to cell adhesion. It may also function as a growth factor receptor. It is thought to be involved in maintaining cells in position during proliferation. Expression of EpCAM seems to correlate inversely with the level of E-cadherin (CD324). EpCAM is considered important in tumor biology.

**Antigen
References:**

1. Borkowski TA, et al. 1996. *Eur. J. Immunol.* 26:110.
2. Bergsagel PL, et al. 1992. *J. Immunol.* 148:590.