

Pacific Blue™ anti-mouse CD19

Catalog # / Size: 1177630 / 25 µg
1177615 / 100 µg

Clone: 6D5

Isotype: Rat IgG2a, κ

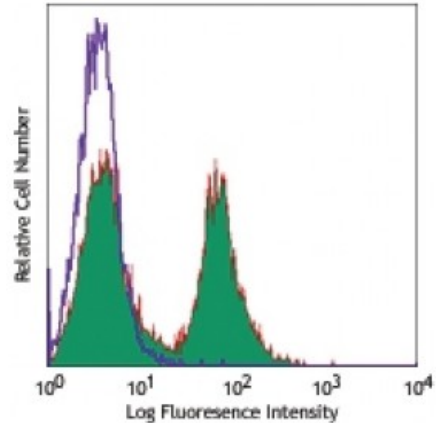
Immunogen: Mouse CD19-expressing K562 human erythroleukemia cells

Reactivity: Mouse

Preparation: The antibody was purified by affinity chromatography, and conjugated with Pacific Blue™ under optimal conditions. The solution is free of unconjugated Pacific Blue™.

Formulation: Phosphate-buffered solution, pH 7.2, containing 0.09% sodium azide.

Concentration: 0.5



C57BL/6 mouse splenocytes were stained with CD19 (clone 6D5) Pacific Blue™ (filled histogram) or rat IgG2a, κ Pacific Blue™ isotype control (open histogram).

Applications:

Applications: Flow Cytometry

Recommended Usage: Each lot of this antibody is quality control tested by immunofluorescent staining with flow cytometric analysis. The suggested use of this reagent is ≤ 0.25 microg per 10^6 cells in 100 microL volume. It is highly recommended that the reagent be titrated for optimal performance for each application.

* Pacific Blue™ has a maximum emission of 455 nm when it is excited at 405 nm. Prior to using Pacific Blue™ conjugate for flow cytometric analysis, please verify your flow cytometer's capability of exciting and detecting the fluorochrome.

Application Notes: Additional reported applications (for the relevant formats) include: immunofluorescence⁷.

Application References:

1. Shoham T, *et al.* 2003. *J. Immunol.* 171:4062. (FC)
2. Goodyear CS, *et al.* 2004. *J. Immunol.* 172:2870. (FC)
3. Kamimura D, *et al.* 2006. *J. Immunol.* 177:306. (FC)
4. Andoniou CE, *et al.* 2005. *Nat. Immunol.* 6:1011. (FC)
5. Lawson BR, *et al.* 2007. *J. Immunol.* 178:5366. (FC)
6. Phan TG, *et al.* 2007. *Nat. Immunol.* 8:992. (FC)
7. Hayashida K, *et al.* 2008. *J. Biol. Chem.* 283:19895. (IF) [PubMed](#)
8. Charles N, *et al.* 2010. *Nat. Med.* 16:701. (FC) [PubMed](#)
9. Bankoti J, *et al.* 2010. *Toxicol. Sci.* 115:422. (FC) [PubMed](#)
10. Stadnisky MD, *et al.* 2011. *Blood.* 117:5133. (FC) [PubMed](#)
11. Perlot T, *et al.* 2012. *J. Immunol.* 188:1201. (FC) [PubMed](#)
12. Ding Y, *et al.* 2013. *J Immunol.* 191:1614. [PubMed](#)
13. Quinn KM, *et al.* 2013. *J. Immunol.* 191:5085. [PubMed](#)
14. Dow LE, *et al.* 2014. *PLoS One.* 9:95236. [PubMed](#)
15. Nagaoka M, *et al.* 2014. *J Immunol.* 193:2812. [PubMed](#)
16. Dema B, *et al.* 2014. *J Exp Med.* 211:2159. [PubMed](#)
17. Hamilton JA, *et al.* 2015. *J Immunol.* 194:5022. [PubMed](#)

Description: CD19 is a 95 kD glycoprotein also known as B4. It is a member of the Ig superfamily, expressed on all pro-B to mature B cells (during development) and follicular dendritic cells. Plasma cells do not express CD19. CD19, in association with CD21 and CD81, forms a molecular complex integral to B cell activation.

Antigen
References:

1. Fearon DT. 1993. *Curr. Opin. Immunol.* 5:341.
2. Krop I, *et al.* 1996. *Eur. J. Immunol.* 26:238.
3. Krop I, *et al.* 1996. *J. Immunol.* 157:48.
4. Tedder TF, *et al.* 1994. *Immunol.*