

**APC/Fire™ 750 anti-mouse CD25**

**Catalog # / Size:** 1109605 / 25 µg  
1109610 / 100 µg

**Clone:** 3C7

**Isotype:** Rat IgG2b, κ

**Immunogen:** IL-2-dependent BALB/c mouse helper T-cell clone HT-2

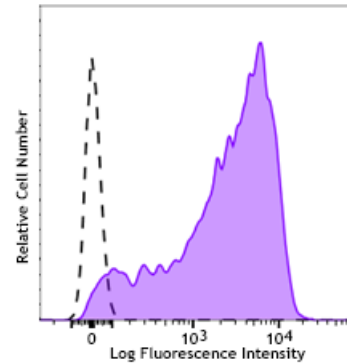
**Reactivity:** Mouse

**Preparation:** The antibody was purified by affinity chromatography and conjugated with APC/Fire™ 750 under optimal conditions.

**Formulation:** Phosphate-buffered solution, pH 7.2, containing 0.09% sodium azide.

**Workshop Number:** 750 under optimal conditions.

**Concentration:** 0.2 mg/ml

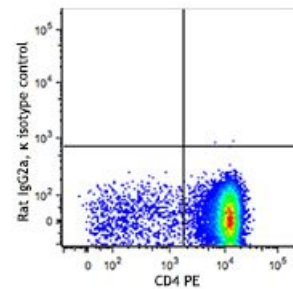


ConA/IL-2 stimulated (3 days) C57BL/6 splenocytes were stained with CD25 (clone 3C7) APC/Fire™ 750 (filled histogram) or rat IgG2b, κ APC/Fire™ 750 isotype control (open histogram).

**Applications:**

**Applications:** Flow Cytometry

**Recommended Usage:** Each lot of this antibody is quality control tested by immunofluorescent staining with flow cytometric analysis. For flow cytometric staining, the suggested use of this reagent is ≤1.0 µg per million cells in 100 µl volume. It is recommended that the reagent be titrated for optimal performance for each application.



\* APC/Fire™ 750 has a maximum excitation of 650 nm and a maximum emission of 787 nm.

**Application Notes:** Additional reported applications (for the relevant formats) include: *in vitro* blocking of IL-2 binding to low- and high-affinity receptors<sup>1,2</sup>, and immunohistochemical staining of acetone-fixed frozen sections. 3C7 antibody recognizes different epitope of PC61 antibody (Cat. No. 102002). The Ultra-LEAF™ Purified antibody (Endotoxin < 0.01 EU/µg, Azide-Free, 0.2 µm filtered) is recommended for functional assays (Cat. No. 101925 and 101926).

**Application References:**

1. Ortega RG, *et al.* 1984. *J. Immunol.* 133:1970. (Block)
2. Moreau JL, *et al.* 1987. *Eur. J. Immunol.* 17:929. (Block)

**Description:** CD25 is a 55 kD glycoprotein, also known as the low affinity IL-2R $\alpha$ , Ly-43, p55, or Tac. It is expressed on activated T and B cells, thymocyte subset, pre-B cells, and T regulatory cells. In association with CD122 (IL-2R $\beta$ ) and CD132 (common  $\gamma$  chain), CD25 forms the high affinity signaling IL-2 receptor.

**Antigen**  
**References:**

1. Taniguchi T, *et al.* 1993. *Cell* 73:5.
2. Waldmann TA. 1991. *J. Biol. Chem.* 266:2681.
3. Read S, *et al.* 2000. *J. Exp. Med.* 192:295.
4. Lowenthal JW, *et al.* 1985. *J. Immunol.* 135:3988.