

**Alexa Fluor® 700 anti-mouse CD23**

**Catalog # / Size:** 1108155 / 25 µg  
1108160 / 100 µg

**Clone:** B3B4

**Isotype:** Rat IgG2a, κ

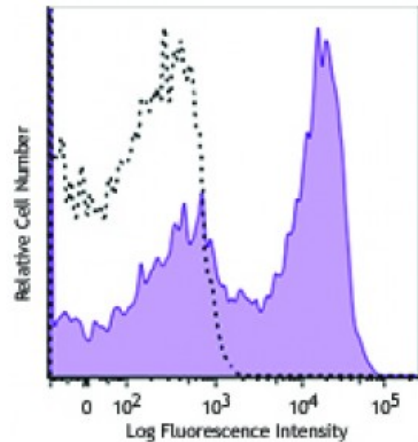
**Immunogen:** Complex of IgE with Fcε receptor isolated from the mouse B hybridoma cell line O1.2B2

**Reactivity:** Mouse

**Preparation:** The antibody was purified by affinity chromatography and conjugated with Alexa Fluor® 700 under optimal conditions.

**Formulation:** Phosphate-buffered solution, pH 7.2, containing 0.09% sodium azide.

**Concentration:** 0.5



C57BL/6 mouse splenocytes were stained with CD23 (clone B3B4) Alexa Fluor® 700 (filled histogram), or rat IgG2a, κ Alexa Fluor® 700 (open histogram).

**Applications:**

**Applications:** Flow Cytometry

**Recommended Usage:** Each lot of this antibody is quality control tested by immunofluorescent staining with flow cytometric analysis. For flow cytometric staining, the suggested use of this reagent is ≤0.06 microg per million cells in 100 microL volume. It is recommended that the reagent be titrated for optimal performance for each application.

\* Alexa Fluor® 700 has a maximum emission of 719 nm when it is excited at 633 nm / 635 nm. Prior to using Alexa Fluor® 700 conjugate for flow cytometric analysis, please verify your flow cytometer's capability of exciting and detecting the fluorochrome.

**Application Notes:** The B3B4 antibody is useful for blocking IgE activity *in vivo*. Additional reported applications (for the relevant formats) include: immunoprecipitation<sup>1</sup>, immunofluorescence microscopy, *in vitro* and *in vivo* blocking of ligand binding<sup>2-4</sup>, and immunohistochemical staining of acetone-fixed frozen sections<sup>5</sup>.

- Application References:**
1. Waldschmidt TJ, *et al.* 1988. *J. Immunol.* 140:2148. (IP)
  2. Rao M, *et al.* 1987. *J. Immunol.* 138:1845. (Block)
  3. Oshiba A, *et al.* 1997. *J. Immunol.* 159:4056. (Block)
  4. Dasic G, *et al.* 1999. *Eur. J. Immunol.* 29:2957. (Block)
  5. Maeda K, *et al.* 1992. *J. Immunol.* 148:2340. (IHC)
  6. Craig VJ, *et al.* 2011. *Cancer Res.* 71:3616. [PubMed](#)

**Description:** CD23 is a 45 kD protein also known as low affinity IgE Fc receptor, FcεRII, BLAST-2, Ly-42, or B6. It is a member of the Ig family, expressed on conventional B (but not B-1) cells and follicular dendritic cells. CD23 responds to high levels of IgE by downregulating IgE secretion.

- Antigen References:**
1. Barclay A, *et al.* 1997. *The Leukocyte Antigen FactsBook* Academic Press.
  2. Delespesse G, *et al.* 1992. *Immunol. Rev.* 125:77.
  3. Flores-Romo L, *et al.* 1993. *Science* 261:1038.

