

PE/Cy7 anti-mouse CD11a

Catalog # / Size: 1105605 / 25 µg
1105610 / 100 µg

Clone: M17/4

Isotype: Rat IgG2a, κ

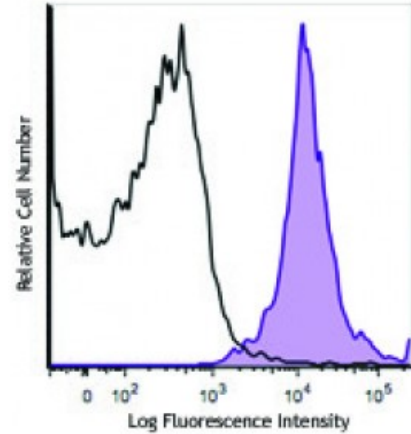
Immunogen: C57BL/6 mouse splenic secondary cytotoxic T cells

Reactivity: Mouse

Preparation: The antibody was purified by affinity chromatography and conjugated with PE/Cy7 under optimal conditions. The solution is free of unconjugated PE/Cy7 and unconjugated antibody.

Formulation: Phosphate-buffered solution, pH 7.2, containing 0.09% sodium azide.

Concentration: 0.2



C57BL/6 mouse splenocytes were stained with CD11a (clone M17/4) PE/Cy7 (filled histogram) or rat IgG2a, κ PE/Cy7 isotype control (open histogram).

Applications:

Applications: Flow Cytometry

Recommended Usage: Each lot of this antibody is quality control tested by immunofluorescent staining with flow cytometric analysis. For flow cytometric staining, the suggested use of this reagent is ≤0.5 microg per million cells in 100 microL volume. It is recommended that the reagent be titrated for optimal performance for each application.

Application Notes: The M17/4 antibody can block CD11a-mediated cellular adhesion. Additional reported applications of this antibody (for the relevant formats) include: immunoprecipitation^{1,2}, *in vitro* blocking of cell-cell adhesion^{1,2} and FOXP3 expression⁵, and immunohistochemical staining of acetone-fixed frozen sections³. The M17/4 antibody does not block the binding of 2D7 antibody (Cat. No. 101002) to CD11a. The LEAF™ purified antibody (Endotoxin <0.1 EU/µg, Azide-Free, 0.2 µm filtered) is recommended for functional assays (Cat. No. 101110). For *in vivo* studies or highly sensitive assays, we recommend Ultra-LEAF™ purified antibody (Cat. No. 101118) with a lower endotoxin limit than standard LEAF™ purified antibodies (Endotoxin <0.01 EU/microg).

- Application References:**
1. Sanchez-Madrid F, *et al.* 1982. *Cell Immunol.* 73:1. (IP, Block)
 2. Kuhlman P, *et al.* 1991. *J. Immunol.* 146:1773. (IP, Block)
 3. Mizgerd JP, *et al.* 1997. *J. Exp. Med.* 186:1357. (IHC)
 4. Hailman E and Allen PM. 2005. *J. Immunol.* 175:4847. (FC)
 5. Verhagen J and Wraith DC. 2014. *J. Immunol. Methods.* S0022. (Block) [PubMed](#)

Description: CD11a is a 180 kD glycoprotein, also known as α_L integrin, LFA-1 α, Ly-15, or Ly-21. It is a member of the integrin family, primarily expressed on lymphocytes, monocytes/macrophages, and granulocytes. In association with CD18, the CD11a/CD18 complex forms LFA-1. CD11a plays an important role in intercellular adhesion and costimulation by binding its ligands, ICAM-1 (CD54), ICAM-2 (CD102), and ICAM-3 (CD50).

Antigen 1. Barclay A, *et al.* 1997. The Leukocyte Antigen FactsBook Academic Press.

- References:**
2. Springer TA. 1994. *Cell* 76:301.
 3. Lub M, *et al.* 1995. *Immunol. Today* 16:479.