

**Pacific Blue™ anti-mouse CD5**

**Catalog # / Size:** 1103210 / 100 µg  
1103205 / 25 µg

**Clone:** 53-7.3

**Isotype:** Rat IgG2a, κ

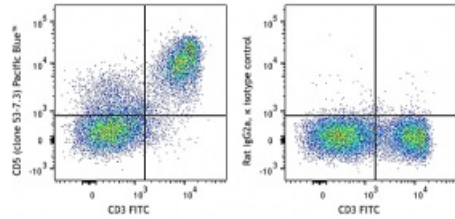
**Immunogen:** Mouse thymus or spleen

**Reactivity:** Mouse

**Preparation:** The antibody was purified by affinity chromatography and conjugated with Pacific Blue™ under optimal conditions. The solution is free of unconjugated Pacific Blue™.

**Formulation:** Phosphate-buffered solution, pH 7.2, containing 0.09% sodium azide.

**Concentration:** 0.5 mg/ml



C57BL/6 mouse splenocytes were stained with CD3 FITC and CD5 (clone 53-7.3) Pacific Blue™ (left) or rat IgG2a, κ Pacific Blue™ isotype control (right).

**Applications:**

**Applications:** Flow Cytometry

**Recommended Usage:** Each lot of this antibody is quality control tested by immunofluorescent staining with flow cytometric analysis. For flow cytometric staining, the suggested use of this reagent is ≤ 0.25 µg per million cells in 100 µl volume. It is recommended that the reagent be titrated for optimal performance for each application.

\* Pacific Blue™ has a maximum emission of 455 nm when it is excited at 405 nm. Prior to using Pacific Blue™ conjugate for flow cytometric analysis, please verify your flow cytometer's capability of exciting and detecting the fluorochrome.

**Application Notes:** Additional reported applications (for the relevant formats) include: immunoprecipitation<sup>1</sup>, and immunohistochemistry<sup>2</sup> of acetone-fixed frozen tissue sections, zinc-fixed paraffin-embedded sections and formalin-fixed paraffin-embedded sections.

- Application References:**
1. Ledbetter JA, et al. 1979. *Immunol. Rev.* 47:63. (IP)
  2. Ledbetter JA, et al. 1980. *J. Exp. Med.* 152:280. (FC, IHC)
  3. Bourdeau A, et al. 2007. *Blood* doi:10.1182/blood-2006-08-044370.

**Description:** CD5 is a 67 kD protein, also known as Lyt-1, Ly-1, T1, Tp67, or Ly-12. It is a member of the scavenger receptor cysteine-rich protein superfamily (SRCR) and primarily expressed on thymocytes, T cells, and B-1 cells. Although mature α/β T cells express high levels of CD5, very few γ/δ T cells express this antigen. The interaction of CD5 with CD72, gp35-37, TCR, or BCR is involved in T and B cell activation.

- Antigen References:**
1. Barclay A, et al. 1997. *The Leukocyte Antigen FactsBook* Academic Press.
  2. Kipps TJ. 1988. *Adv. Immunol.* 47:117.
  3. Antin JH, et al. 1985. *J. Immunol.* 136:505.
  4. Tarakhovsky A, et al. 1995. *Science* 269:535.