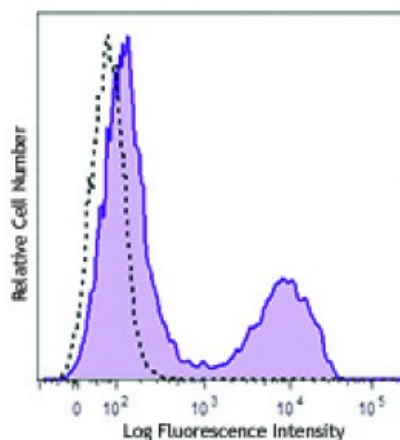


Brilliant Violet 510™ anti-mouse CD5**Catalog # / Size:** 1103135 / 50 µg**Clone:** 53-7.3**Isotype:** Rat IgG2a, κ**Immunogen:** Mouse thymus or spleen**Reactivity:** Mouse**Preparation:** The antibody was purified by affinity chromatography and conjugated with Brilliant Violet 510™ under optimal conditions. The solution is free of unconjugated Brilliant Violet 510™ and unconjugated antibody.**Formulation:** Phosphate-buffered solution, pH 7.2, containing 0.09% sodium azide and BSA (origin USA).**Concentration:** 0.2

C57BL/6 mouse splenocytes were stained with CD5 (clone 53-7.3) Brilliant Violet 510™ (filled histogram) or rat IgG2a Brilliant Violet 510™ isotype control (open histogram).

Applications:**Applications:** Flow Cytometry

Recommended Usage: Each lot of this antibody is quality control tested by immunofluorescent staining with flow cytometric analysis. For flow cytometric staining, the suggested use of this reagent is ≤0.5 microg per million cells in 100 microL volume. It is recommended that the reagent be titrated for optimal performance for each application.

Brilliant Violet 510™ excites at 405 nm and emits at 510 nm. The bandpass filter 510/50 nm is recommended for detection, although filter optimization may be required depending on other fluorophores used. **Be sure to verify that your cytometer configuration and software setup are appropriate for detecting this channel.** Refer to your instrument manual or manufacturer for support. Brilliant Violet 510™ is a trademark of Sirigen Group Ltd.

Application Notes: Additional reported applications (for the relevant formats) include: immunoprecipitation¹, and immunohistochemistry² of acetone-fixed frozen tissue sections, zinc-fixed paraffin-embedded sections and formalin-fixed paraffin-embedded sections.

Application References:

1. Ledbetter JA, *et al.* 1979. *Immunol. Rev.* 47:63. (IP)
2. Ledbetter JA, *et al.* 1980. *J. Exp. Med.* 152:280. (FC, IHC)
3. Bourdeau A, *et al.* 2007. *Blood* doi:10.1182/blood-2006-08-044370.

Description: CD5 is a 67 kD protein, also known as Lyt-1, Ly-1, T1, Tp67, or Ly-12. It is a member of the scavenger receptor cysteine-rich protein superfamily (SRCR) and primarily expressed on thymocytes, T cells, and B-1 cells. Although mature α/β T cells express high levels of CD5, very few γ/δ T cells express this antigen. The interaction of CD5 with CD72, gp35-37, TCR, or BCR is involved in T and B cell activation.

Antigen 1. Barclay A, *et al.* 1997. The Leukocyte Antigen FactsBook Academic Press.

- References:**
2. Kipps TJ. 1988. *Adv. Immunol.* 47:117.
 3. Antin JH, *et al.* 1985. *J. Immunol.* 136:505.
 4. Tarakhovsky A, *et al.* 1