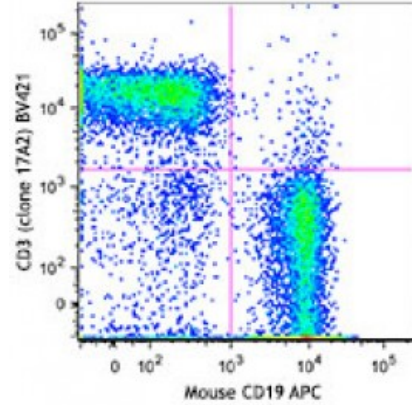


**Brilliant Violet 711™ anti-mouse CD3**

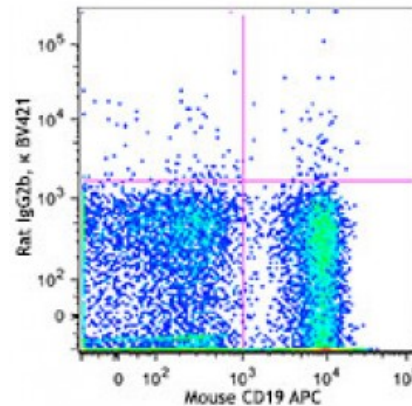
**Catalog # / Size:** 1101205 / 50 µg  
**Clone:** 17A2  
**Isotype:** Rat IgG2b, κ  
**Immunogen:** γδTCR-positive T-T hybridoma D1  
**Reactivity:** Mouse  
**Preparation:** The antibody was purified by affinity chromatography and conjugated with Brilliant Violet 711™ under optimal conditions. The solution is free of unconjugated Brilliant Violet 711™ and unconjugated antibody.  
**Formulation:** Phosphate-buffered solution, pH 7.2, containing 0.09% sodium azide and BSA (origin USA).  
**Concentration:** 0.2



C57BL/6 splenocytes were stained with CD19 APC and CD3 (clone 17A2) Brilliant Violet 711™ (top) or rat IgG2b, κ Brilliant Violet 711™ isotype control (bottom).

**Applications:**

**Applications:** Flow Cytometry  
**Recommended Usage:** Each lot of this antibody is quality control tested by immunofluorescent staining with flow cytometric analysis. For flow cytometric staining, the suggested use of this reagent is ≤0.25 microg per million cells in 100 microL volume. It is recommended that the reagent be titrated for optimal performance for each application.



Brilliant Violet 711™ excites at 405 nm and emits at 711 nm. The bandpass filter 710/50 nm is recommended for detection, although filter optimization may be required depending on other fluorophores used. **Be sure to verify that your cytometer configuration and software setup are appropriate for detecting this channel.** Refer to your instrument manual or manufacturer for support. Brilliant Violet 711™ is a trademark of Sirigen Group Ltd.

**Application Notes:** The 17A2 antibody recognizes ε/γ (but not ε/δ) of the CD3 complex. The 17A2 antibody can induce T cell activation and has been reported to deplete CD3<sup>+</sup> cells *in vivo*. Additional reported applications (for the relevant formats) include: immunoprecipitation<sup>1</sup>, complement-mediated cytotoxicity<sup>1,3</sup>,

immunohistochemical staining of acetone-fixed frozen sections<sup>1,4</sup>, *in vitro* stimulation of T cells<sup>1</sup> and depletion of CD3<sup>+</sup> cells *in vivo*<sup>2</sup>. The LEAF™ purified antibody (Endotoxin <0.1 EU/μg, Azide-Free, 0.2 μm filtered) is recommended for functional assays (Cat. No. 100208). For *in vivo* studies or highly sensitive assays, we recommend Ultra-LEAF™ purified antibody (Cat. No. 100238) with a lower endotoxin limit than standard LEAF™ purified antibodies (Endotoxin <0.01 EU/microg).

- Application**  
**References:**
1. Miescher GC, *et al.* 1989. *Immunol. Lett.* 23:113. (IP, IHC, Activ, CMCD)
  2. Mysliwicz J, *et al.* 1992. *Blood* 80:2661. (Deplete)
  3. Wu L, *et al.* 1991. *J. Exp. Med.* 174:1617. (CMCD)
  4. Zhang Y, *et al.* 2002. *J. Immunol.* 168:3088. (IHC)
  5. Zan H, *et al.* 2005. *EMBO J.* 24:3757.
  6. Morgado P, *et al.* 2011. *Infect Immun.* 79:4401. [PubMed](#)
  7. Xiao J, *et al.* 2012. *Arterioscler Thromb Vasc Biol.* 32:386. [PubMed](#)
  8. Lei F, *et al.* 2013. *J Vis Exp.* 60:3986. [PubMed](#).
- 

**Description:** CD3, also known as T3, is a member of the Ig superfamily and primarily expressed on T cells, NK-T cells, and at different levels on thymocytes during T cell differentiation. CD3 is composed of CD3ε, δ, γ and ζ chains. It forms a TCR complex by associating with TCR α/β or γ/δ chains. CD3 plays a critical role in TCR signal transduction, T cell activation, and antigen recognition by binding the peptide/MHC antigen complex.

- Antigen**  
**References:**
1. Barclay A, *et al.* 1997. *The Leukocyte Antigen FactsBook* Academic Press.
  2. Davis MM. 1990. *Annu. Rev. Biochem.* 59:475.
  3. Weiss A, *et al.* 1994. *Cell* 76:263.