

**PE anti-mouse CD2**

**Catalog # / Size:** 1100535 / 50 µg  
1100540 / 200 µg

**Clone:** RM2-5

**Isotype:** Rat IgG2b, λ

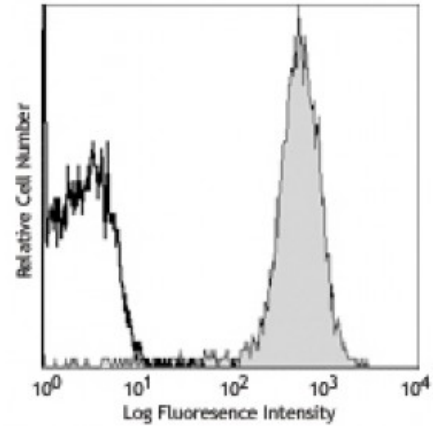
**Immunogen:** BALB/c mouse thymocytes

**Reactivity:** Mouse

**Preparation:** The antibody was purified by affinity chromatography, and conjugated with PE under optimal conditions. The solution is free of unconjugated PE and unconjugated antibody.

**Formulation:** Phosphate-buffered solution, pH 7.2, containing 0.09% sodium azide.

**Concentration:** 0.2



C57BL/6 mouse splenocytes stained with RM2-5 PE

**Applications:**

**Applications:** Flow Cytometry

**Recommended Usage:** Each lot of this antibody is quality control tested by immunofluorescent staining with flow cytometric analysis. For flow cytometric staining, the suggested use of this reagent is ≤ 0.25 microg per 10<sup>6</sup> cells in 100 microL volume. It is recommended that the reagent be titrated for optimal performance for each application.

**Application Notes:** Additional reported applications (for the relevant formats) include: *in vitro* blocking of CD2-mediated cell-cell adhesion and inhibition of T cell activation<sup>1</sup>, blocking of T cell A.I.C.D.2, immunoprecipitation<sup>3</sup>, and co-induction of thymocyte maturation<sup>4</sup>. The RM2-5 antibody can block CD2-mediated cell-cell adhesion. The LEAF™ purified antibody (Endotoxin <0.1 EU/µg, Azide-Free, 0.2 µm filtered) is recommended for functional assays (Cat. No. 100110).

- Application References:**
1. Nakamura T, *et al.* 1990. *J. Immunol.* 145:3628. (Block)
  2. Ayroldi E, *et al.* 1997. *Blood* 89:3717. (Block)
  3. Criado G, *et al.* 1996. *Eur. J. Immunol.* 26:1228. (IP)
  4. Cibotti R, *et al.* 1997. *Immunity* 6:245. (Costim)

**Description:** CD2 is a 45-58 kD type I transmembrane glycoprotein, also known as LFA-2, T11 or Ly-37. It is a member of the Ig superfamily. Mouse CD2 is primarily expressed on T cells, B cells, thymocytes and NK cells. It is a ligand for CD48 and is involved in T cell activation and differentiation.

- Antigen References:**
1. Barclay AN, *et al.* 1997. *The Leukocyte Antigen FactsBook* Academic Press.
  2. Davis SJ, *et al.* 1996. *Immunol. Today* 17:177.
  3. Bierer BE, *et al.* 1989. *Annu. Rev. Immunol.* 7:579.